

Developing a Cemetery Preservation Plan

2022

*SC Preserving Historic Cemeteries
Workshop*

*SC Archives & History Center
Columbia, SC S September 29, 2022*



Debi Hacker

Chicora
Foundation, Inc.

PO Box 8664

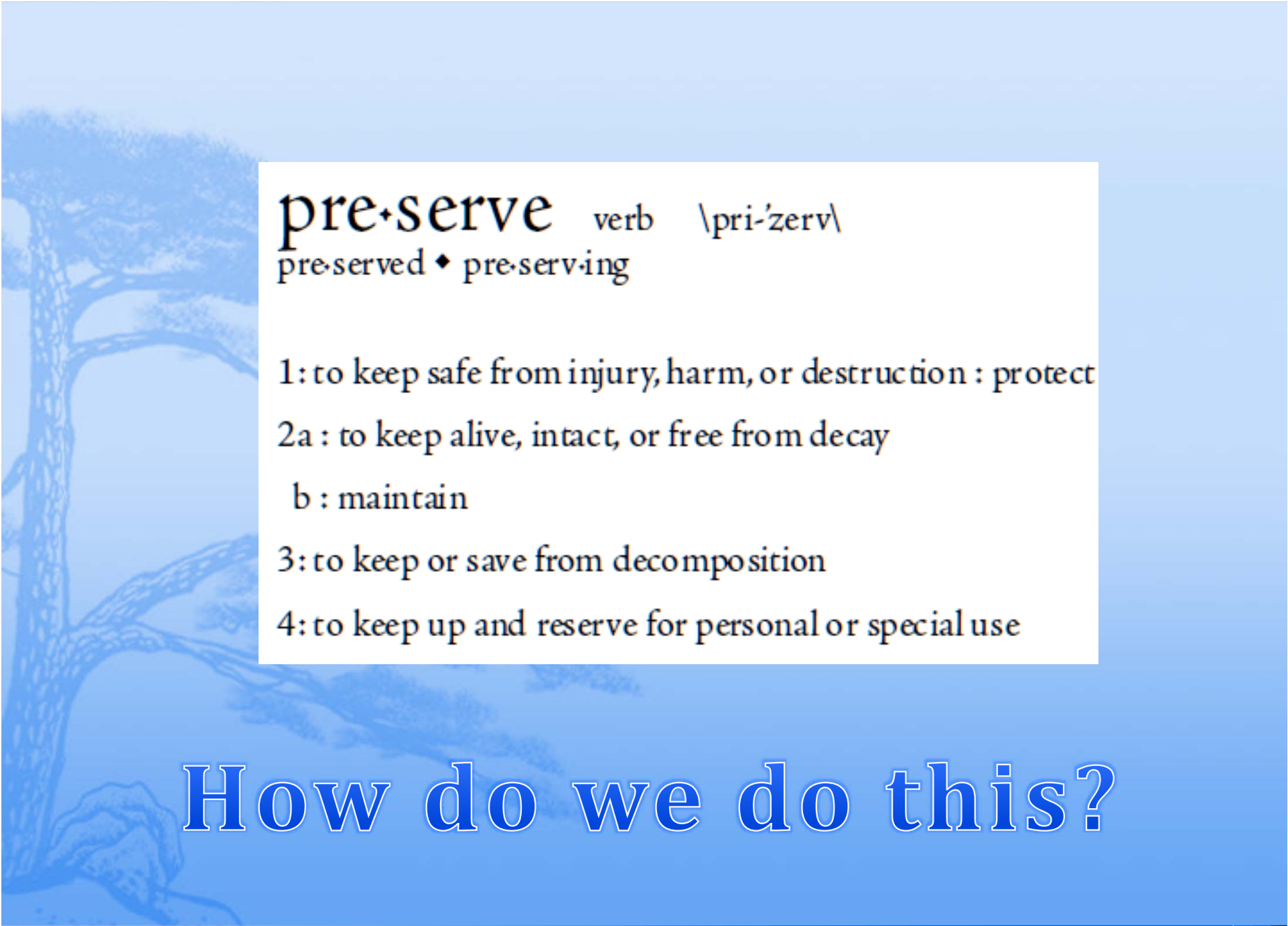
Columbia, SC 29202

www.chicora.org

What Chicora Does

- ✿ Treatment of Stone and Iron
- ✿ Condition Assessments
- ✿ Preservation Plans
- ✿ Historical Research
- ✿ Identification of Graves
- ✿ Mapping Cemeteries

Check us out at www.chicora.org/cemetery-preservation.html



pre·serve verb \pri-'zerv\
pre·served ♦ pre·serv·ing

1: to keep safe from injury, harm, or destruction : protect

2a : to keep alive, intact, or free from decay

b : maintain

3: to keep or save from decomposition

4: to keep up and reserve for personal or special use

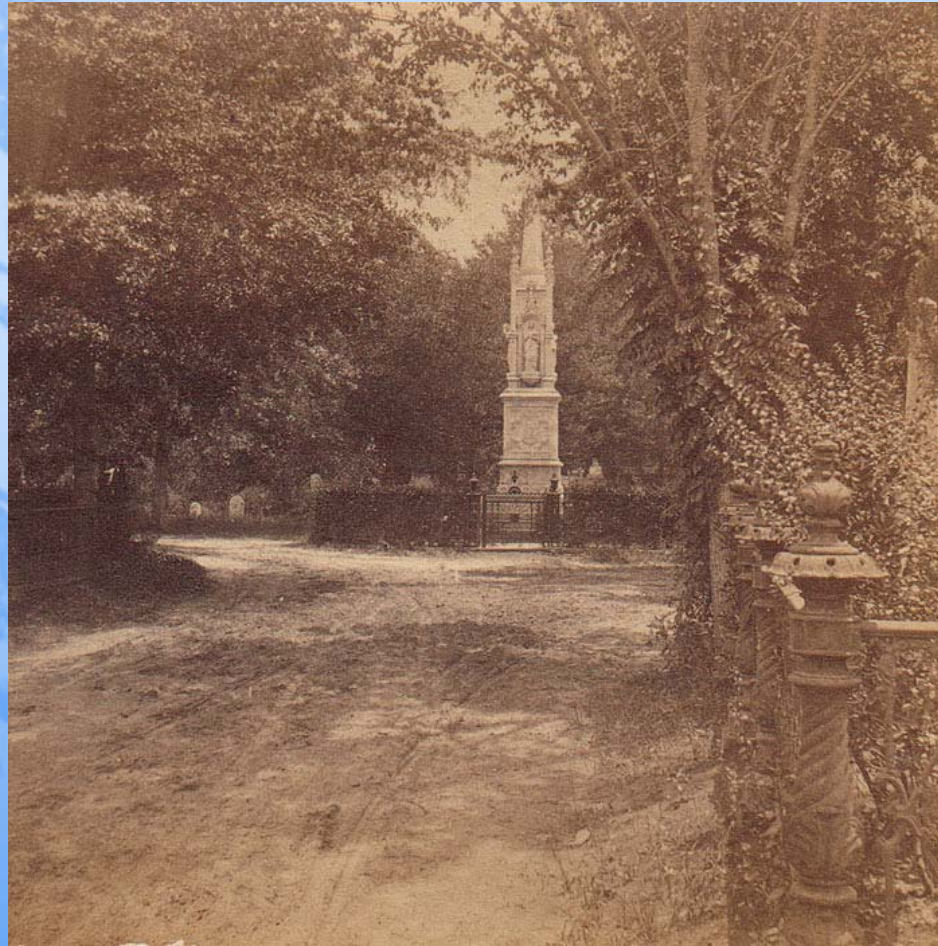
How do we do this?

Secretary of Interior's Standards

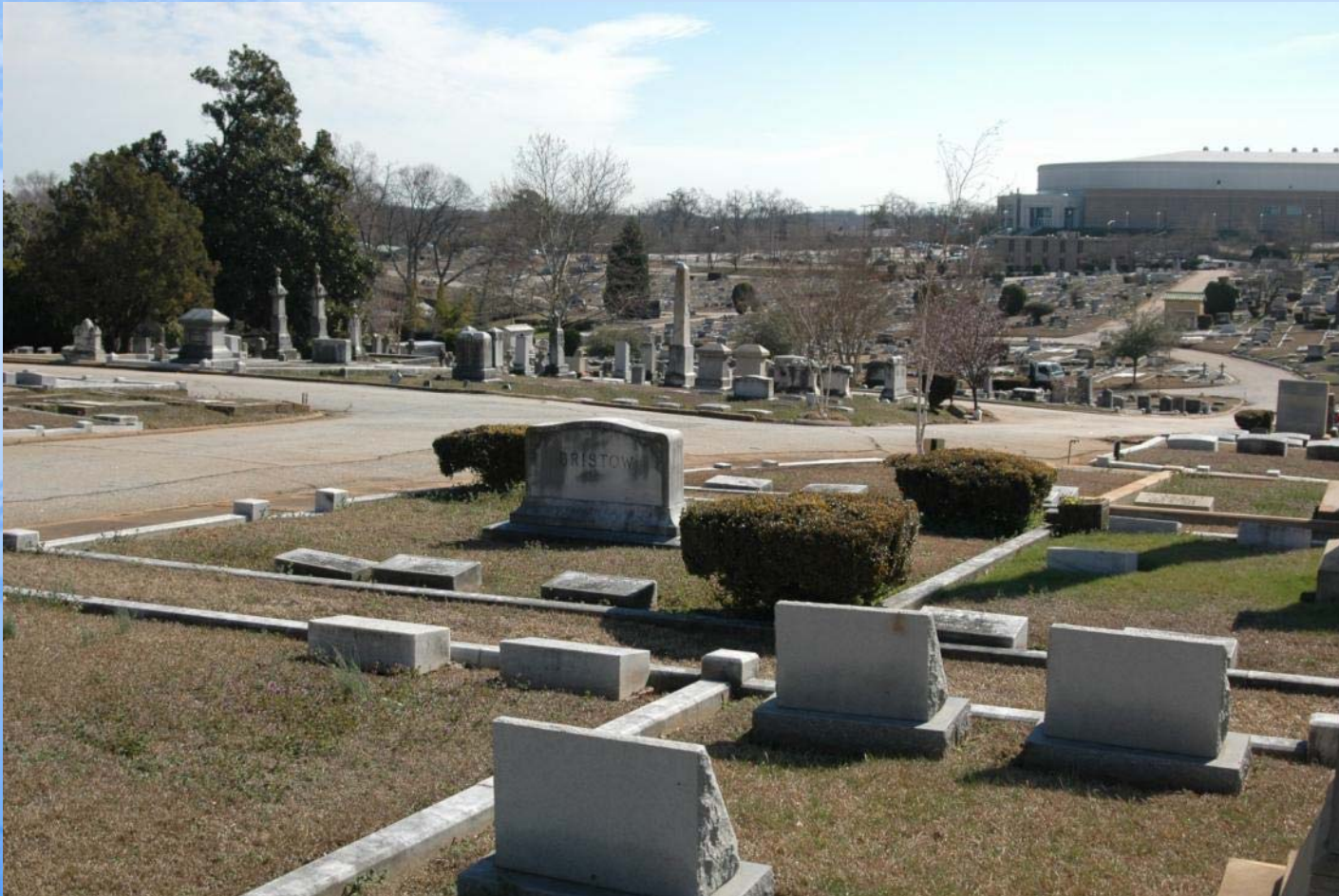


http://www.cr.nps.gov/hps/tps/standguide/preserve/preserve_standards.htm

Property Will Be Used as it Was Historically



Retain the Historic Character



Work will be Physically and Visually Compatible



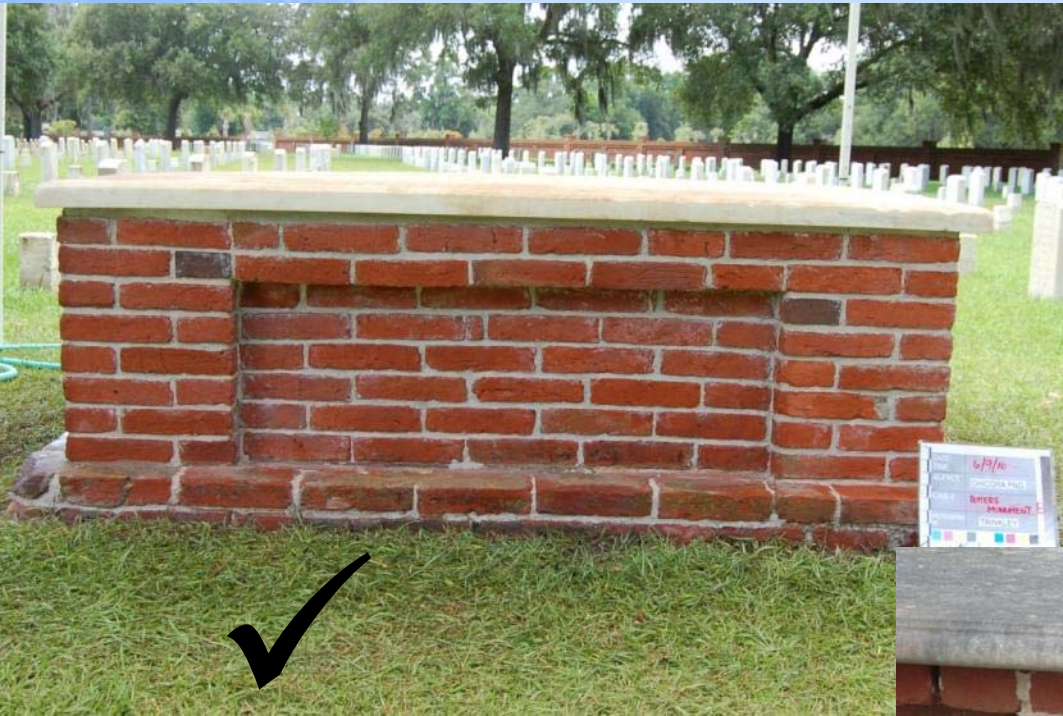
Changes will be Retained and Preserved



Distinctive Materials will be Preserved



New Material will Match the Old



Treatments will be the Gentlest Possible



Archeological Resources will be Protected



A “Typical” Preservation Plan

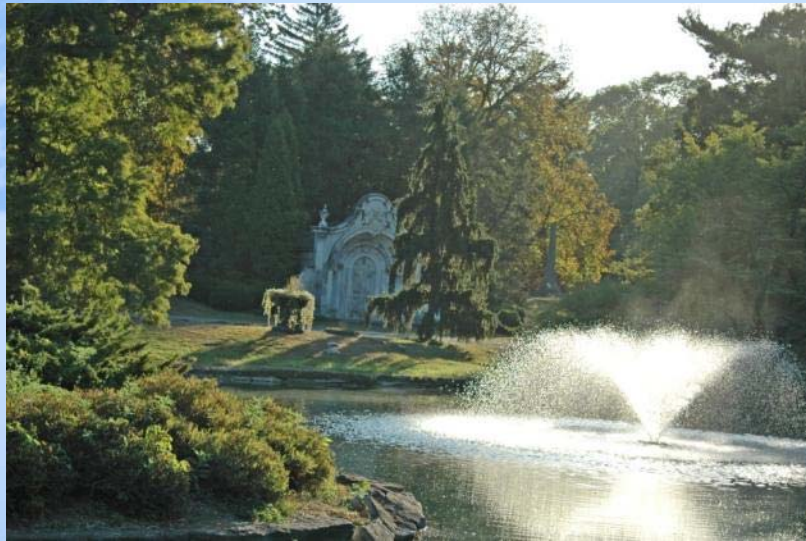


- ✿ *May include:*
 - ✿ Inventory of stones
 - ✿ History
 - ✿ Mapping
- ✿ *But these features are critical:*
 - ✿ Current conditions & long-term needs
 - ✿ Priorities & funding

Landscape Character

- ✧ Sometimes called a “Cultural Landscape Evaluation”
 - ✧ Topography
 - ✧ Land uses
 - ✧ Spatial relationships
 - ✧ Views
 - ✧ Landscape Dividers
 - ✧ Vegetation itself

What is the Character of the Landscape?



Roads and Pedestrian Issues

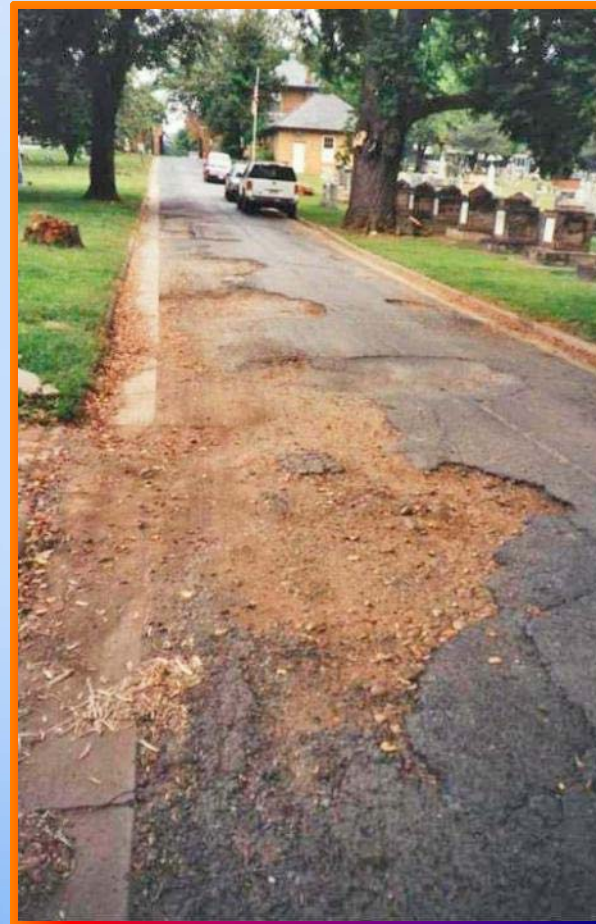
- ✿ Access and circulation
- ✿ Condition of historic features
- ✿ Roadways and curbs
- ✿ Drainage
- ✿ Pedestrian access, sidewalks, pathways
- ✿ Universal access



Access and Circulation



Roadways and Curbs



ROADS AND PEDESTRIAN ISSUES



Pedestrian Access, Sidewalks, Pathways

Universal Access



Security Issues

- ✿ Vandalism
- ✿ Cemetery lighting
- ✿ Hardening targets
- ✿ Homelessness & other inappropriate uses



Vandalism



Lighting



SECURITY ISSUES



Hardening Targets





Homelessness and Other Inappropriate Uses



Graffiti



Fixtures and Furnishings

- ✿ Cemetery buildings
- ✿ Plot fences
- ✿ Lot amenities



Cemetery Buildings





Plot Fences



Lot Amenities



Landscape Issues

- ✿ Trees
- ✿ Turfgrass
- ✿ Shrubbery
- ✿ Other landscape issues

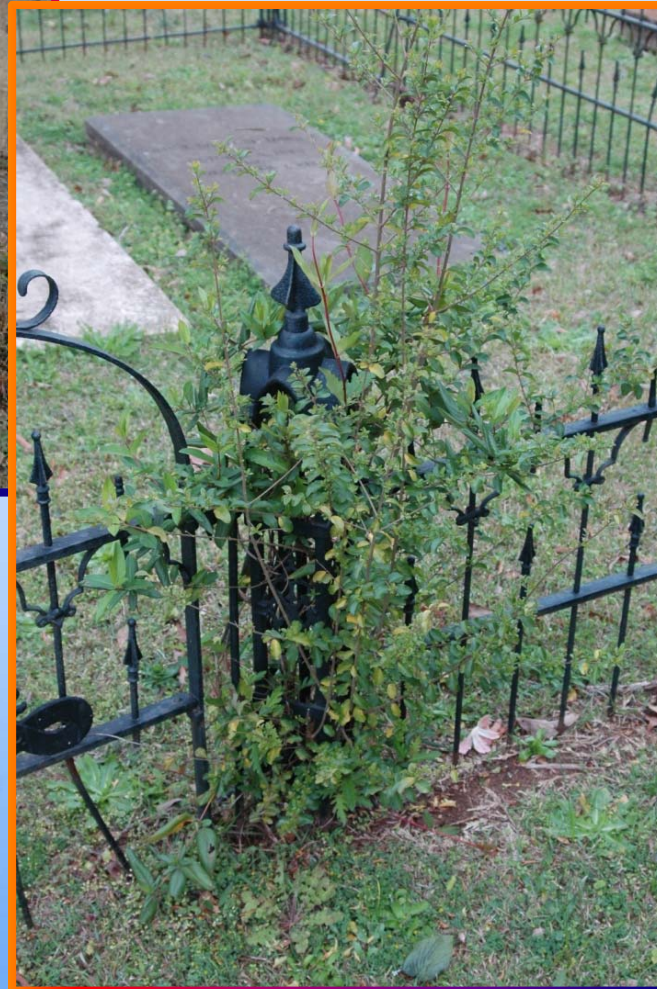


Trees

LANDSCAPE ISSUES



Turfgrass & weeds



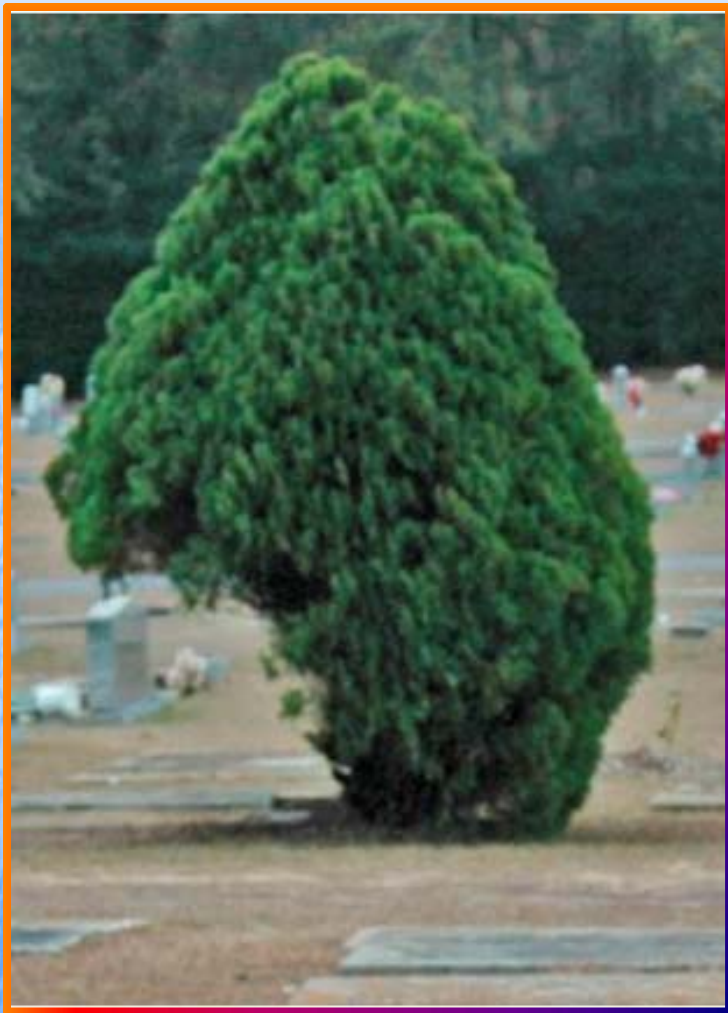


Improper Mowing and Trimming

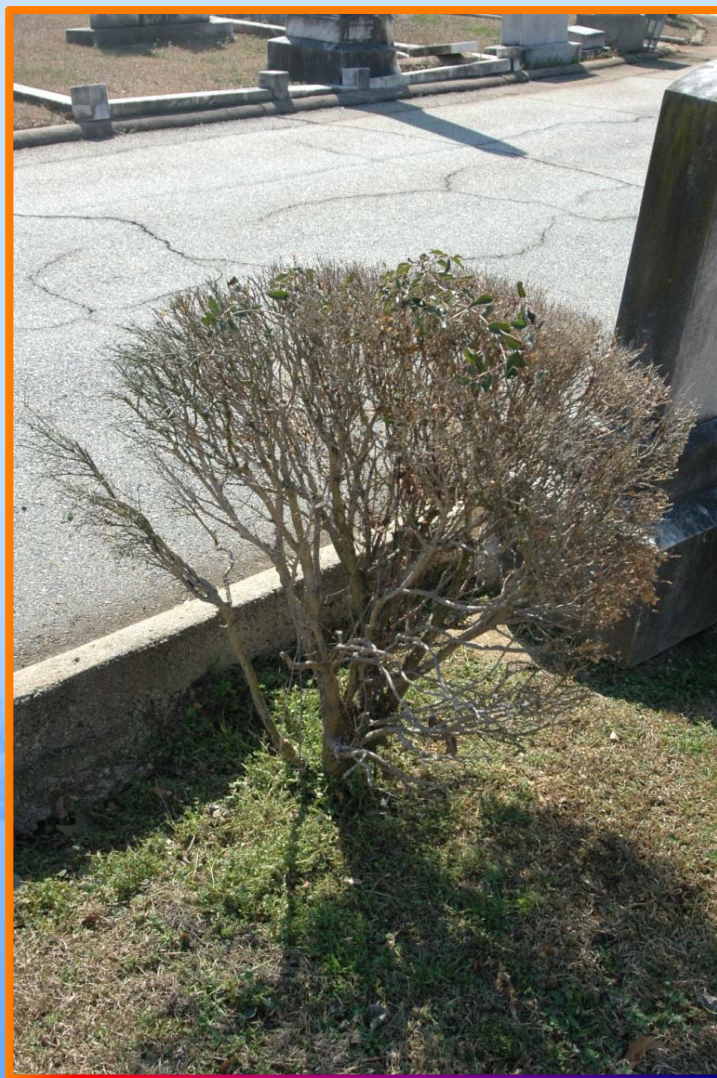




Damage to Stones



Shrubbery





Pest Problems

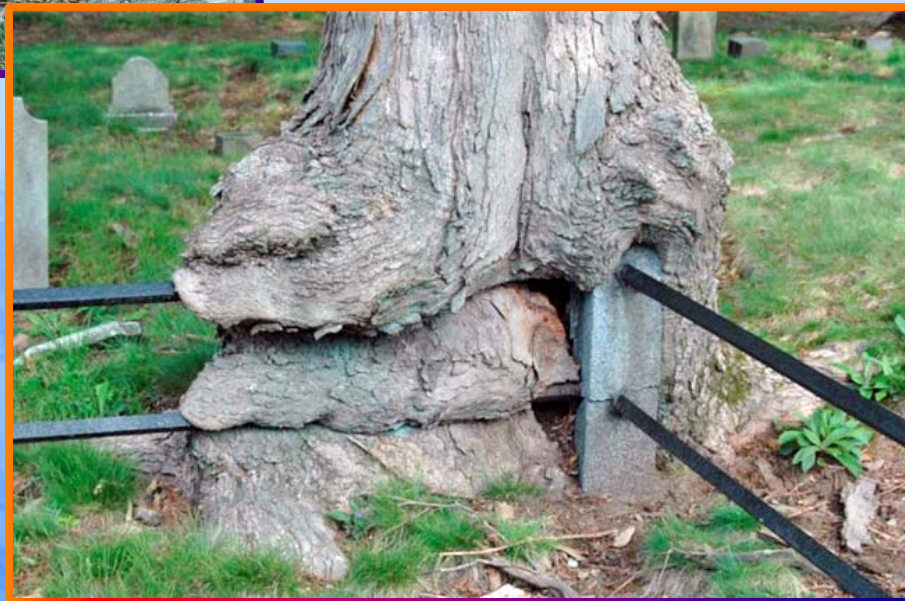




Erosion



Trees in the Wrong Places



Other Maintenance Issues

- ✿ Existing rules
- ✿ Flowers and grave decorations
- ✿ Signage
- ✿ Maintenance facilities
- ✿ Lost stones
- ✿ Other issues

Establish and Post Rules

* Critical Rules

- * Hours
- * No gravestone rubbing
- * Do not sit or lean on tombs or gravestones
- * No alcoholic beverages
- * No dogs allowed

* Other Rules for Consideration

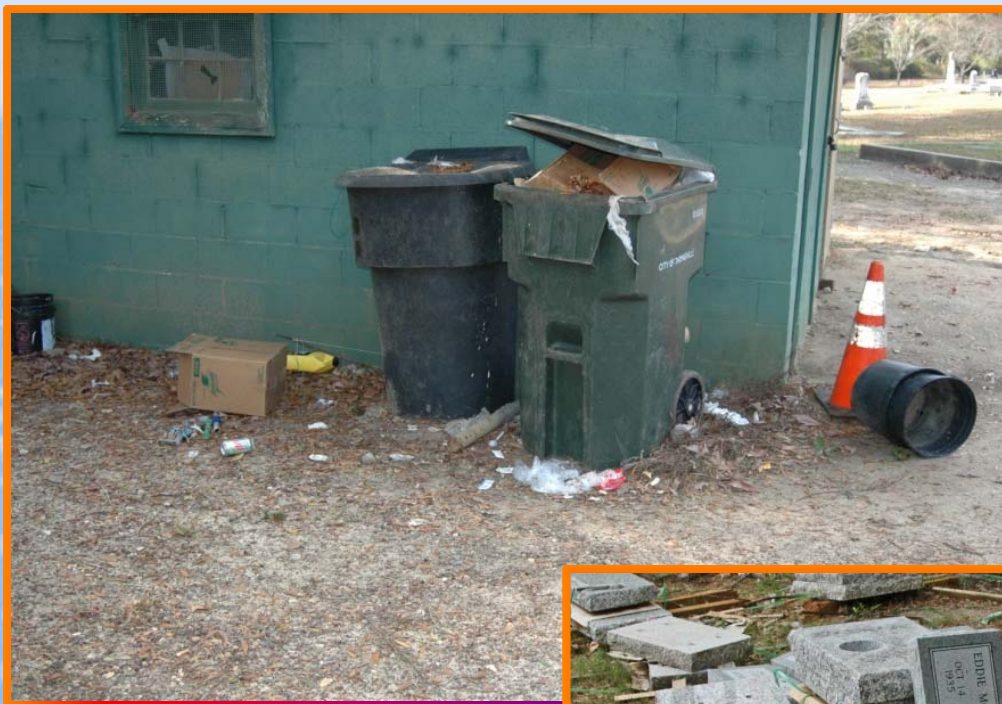
- * Jogging, athletic games
- * Prohibition of skates, bikes, skateboards
- * Proper conduct (no loud noise)
- * Littering
- * Cutting flowers/plants



Flowers and Grave Decorations



Signage



Maintenance Facilities



OTHER MAINTENANCE ISSUES



Lost or Orphan Stones

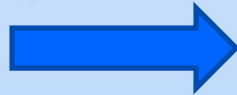
OTHER MAINTENANCE ISSUES



Trash

Conservation Issues

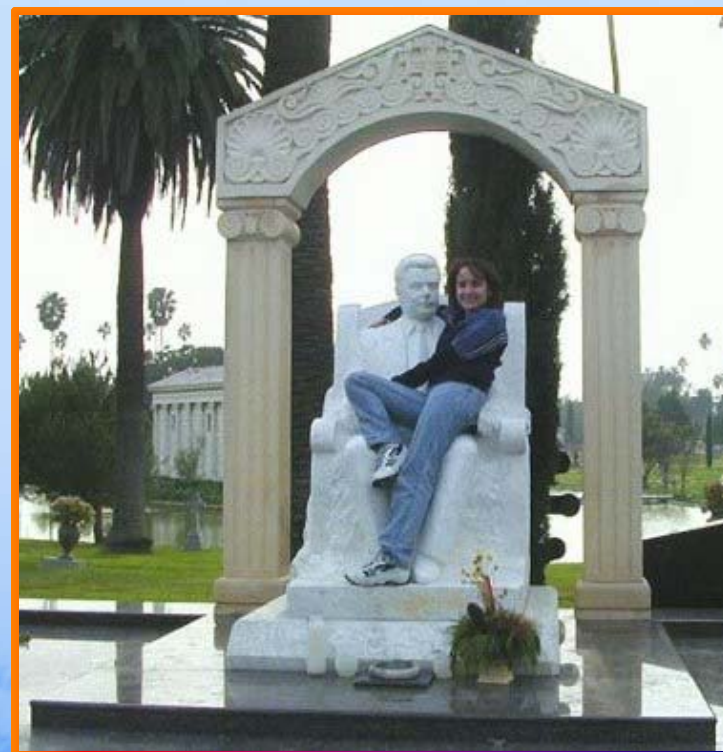
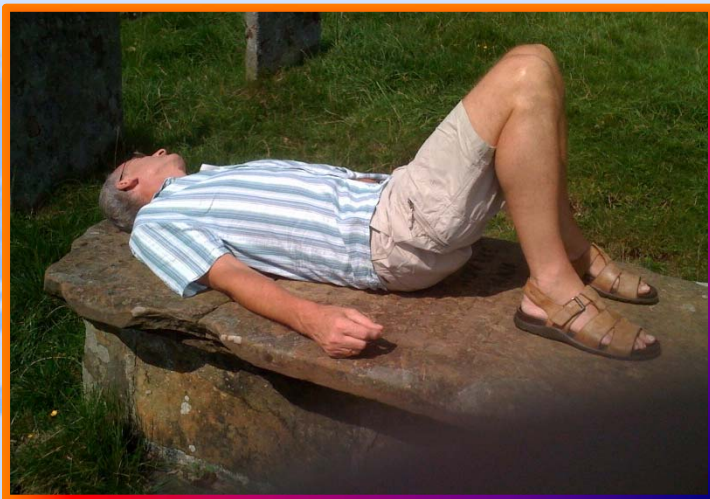
- * Monuments
- * Structures
- * Walls
- * Fences



- * Condition
- * Appropriate conservation approaches
- * Priorities

Understanding Deterioration

- ✿ People
 - ✧ mower damage
 - ✧ vandalism
 - ✧ carelessness
- ✿ Nature
 - ✧ acid rain/pollutants
 - ✧ wetting/drying cycles
 - ✧ salts
 - ✧ freeze/thaw
 - ✧ inherent vice of some stone
 - ✧ other issues



People





Nature



Does your cemetery have
a disaster plan?

UNDERSTANDING DETERIORATION



Inherent Vice



Typical Stone Problems

- ✿ Broken
- ✿ Tilted
- ✿ Loose or displaced
- ✿ Ferrous pins

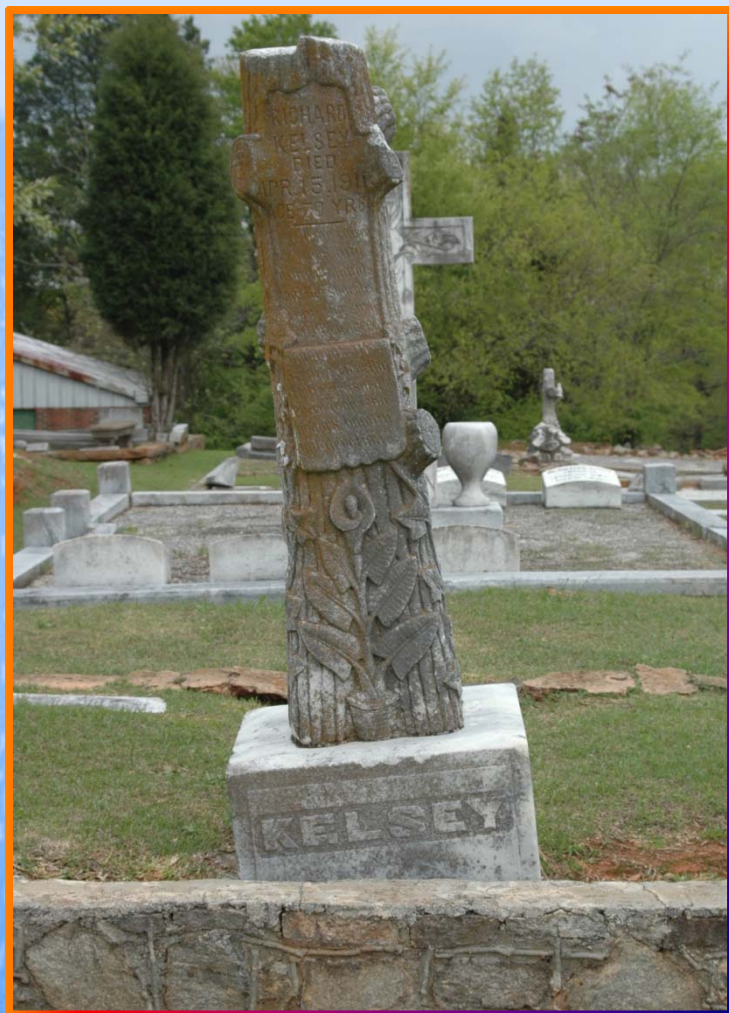
TYPICAL STONE PROBLEMS



Broken



TYPICAL STONE PROBLEMS



Tilted & displaced



TYPICAL STONE PROBLEMS



Ferrous Pins



Develop Priorities

- ✿ Technical
 - 1 – hazardous to itself, other stones, people
 - 2 – unstable deterioration, needs immediate attention
 - 3 – ongoing deterioration, treat 2-5 years
 - 4 – reinspect in 5 years
 - 5 – not repairable using available technology
- ✿ Artistic, historic, visually prominent, important to community



Technical Priority 1 – Hazardous to itself and visitors



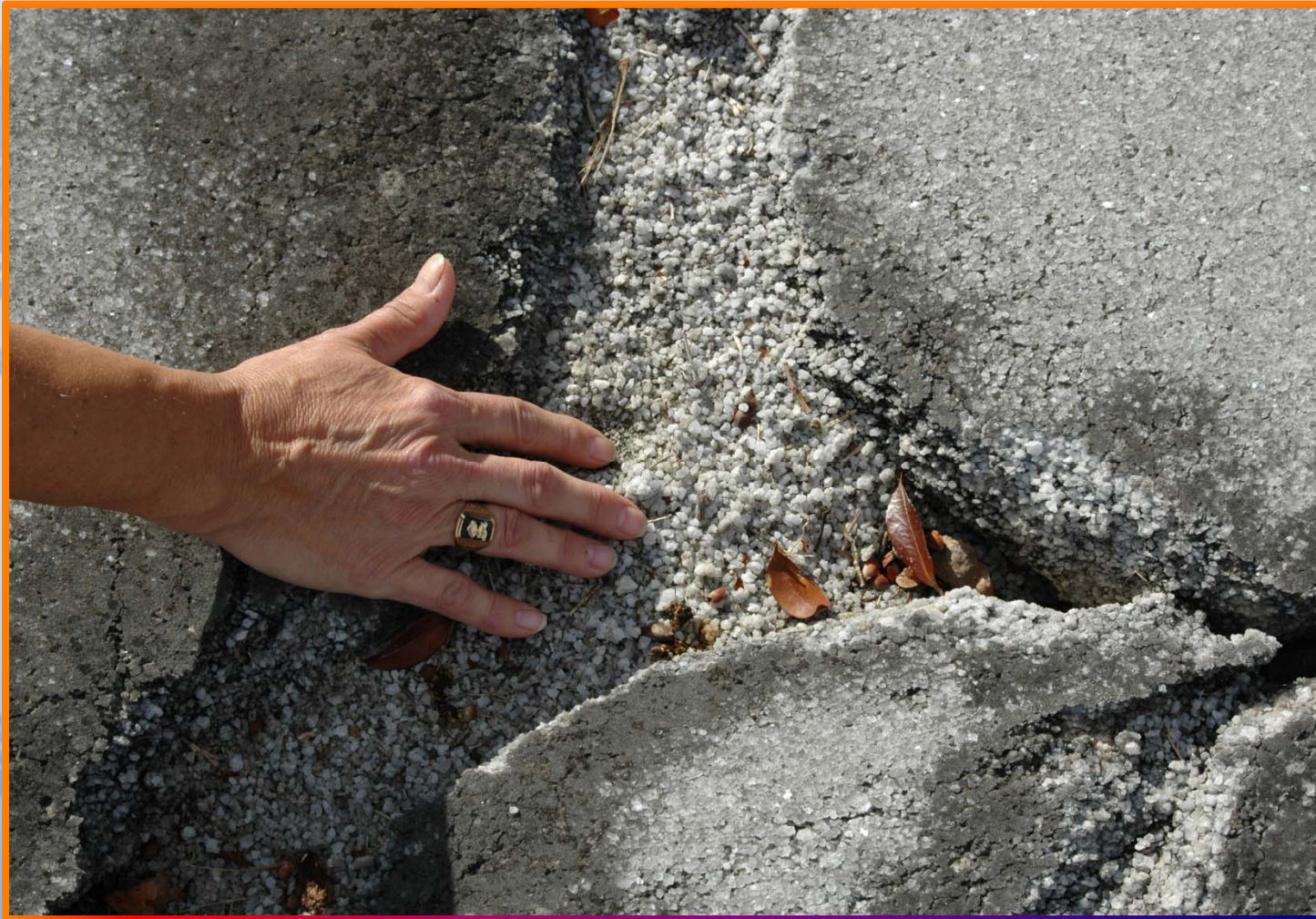
Technical Priority 2 – Unstable Deterioration



Technical Priority 3 – On-going Deterioration



Technical Priority 4 – Reinspect in 5-10 years



Technical Priority 5 – Not Repairable

Assign Costs

Table 5.
Projected Budget for the Clay Cemetery, 2011-2015

Activity	Estimated Cost	Notes
Priority 1		
Improving entrance	900.00	
Clean, repair, paint Clifton Street fence	100.00	supplies only
Remove 4 dead trees	4,800.00	
Signage	400.00	
	\$6,200.00	
Priority 2		
Conservation treatments	11,000.00	
Approx. 364 linear feet of chain link fencing	10,500.00	
Remove 4 medium size trees and 27 smaller trees	17,700.00	
ISA certified arborist inspection	900.00	yearly
Garlon 4 herbicide	380.00	
Trees for replanting	600.00	every 2-4 years
	\$41,080.00	
Priority 3		
Pruning approx. 10 trees	5,000.00	
Mulching mower (rental)	80.00	yearly
Historical research, approx. 60 hr.	4,500.00	
	\$9,580.00	
Estimated Total Budget	\$56,860.00	

Seek Funding

- ✿ Expect the owning group to fulfill its responsibility
- ✿ Think locally
 - ✿ Descendants
 - ✿ Local foundations, businesses
- ✿ Explore other options
 - ✿ NPS Survey & Planning Grants
 - ✿ National Trust grants

