



One Church, Many Communities

Taveau Church

25

Biggin Church Ruins
Cainhoy Historic District
Cooper River Historic District
Keller Site
Lawson's Pond Plantation
Lewisfield Plantation
Loch Dhu
Medway
Middleburg Plantation
Mulberry Plantation
Otranto Plantation
Otranto Plantation Indigo Vats
Pineville Historic District
Pinopolis Historic District North
Pinopolis Historic District South
Pompion Hill Chapel
Quinby Plantation House--Halidon Hill Plantation
Richmond Plantation
William Robertson House
Santee Canal
St. James' Church, Goose Creek
St. Stephen's Episcopal Church
Strawberry Chapel and Childsbury Town Site
Taveau Church
White Church



Taveau: A Community Church

The Faithful People

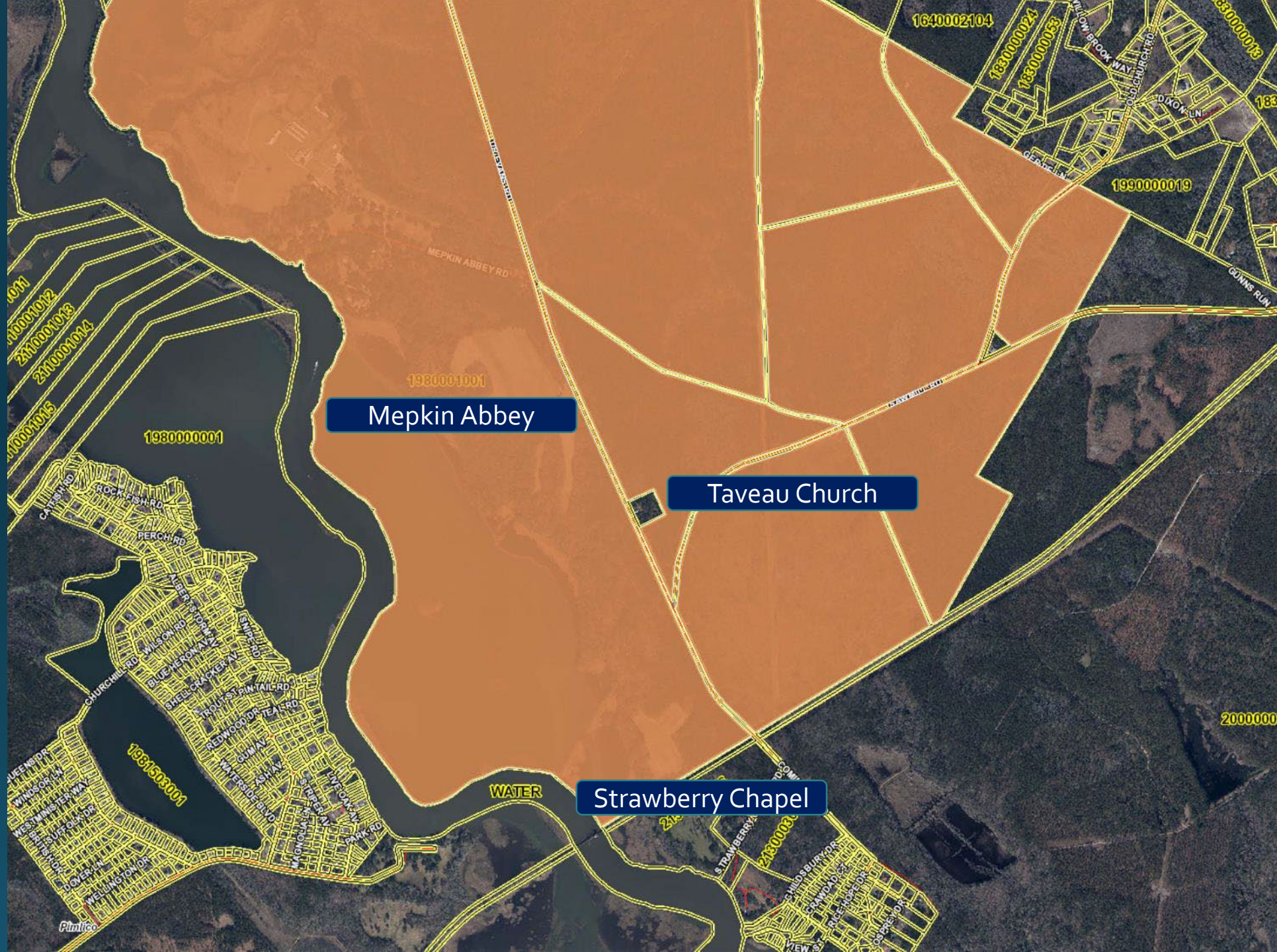
Charlena Rivers
Her grandfather preached at Taveau





Taveau: Interconnected History

The Neighborhood









Taveau: Partnerships for the Future

The Sacred Corridor





MARY H. GIBBS
WIFE OF
WILLIAM J. BALL
NOV. 19, 1837
JULY 4, 1936





Taveau: Today

The Status



Opinion

Syndicated and guest columns represent the personal views of the writers, not necessarily those of the editorial staff. The editorial department operates entirely independently of the news department and is not involved in newsroom operations.

Behre: Berkeley County is losing one of its historic churches

BY ROBERT BEHRE
JUN 11, 2022



Taveau Chapel, nestled off S.C. Highway 402 near the entrance to Mepkin Abbey, has deteriorated further since this photo was taken in 2019. Robert Behre/staff

BY ROBERT BEHRE RBEHRE@POSTANDCOURIER.COM

BUY NOW





Preservation South Carolina