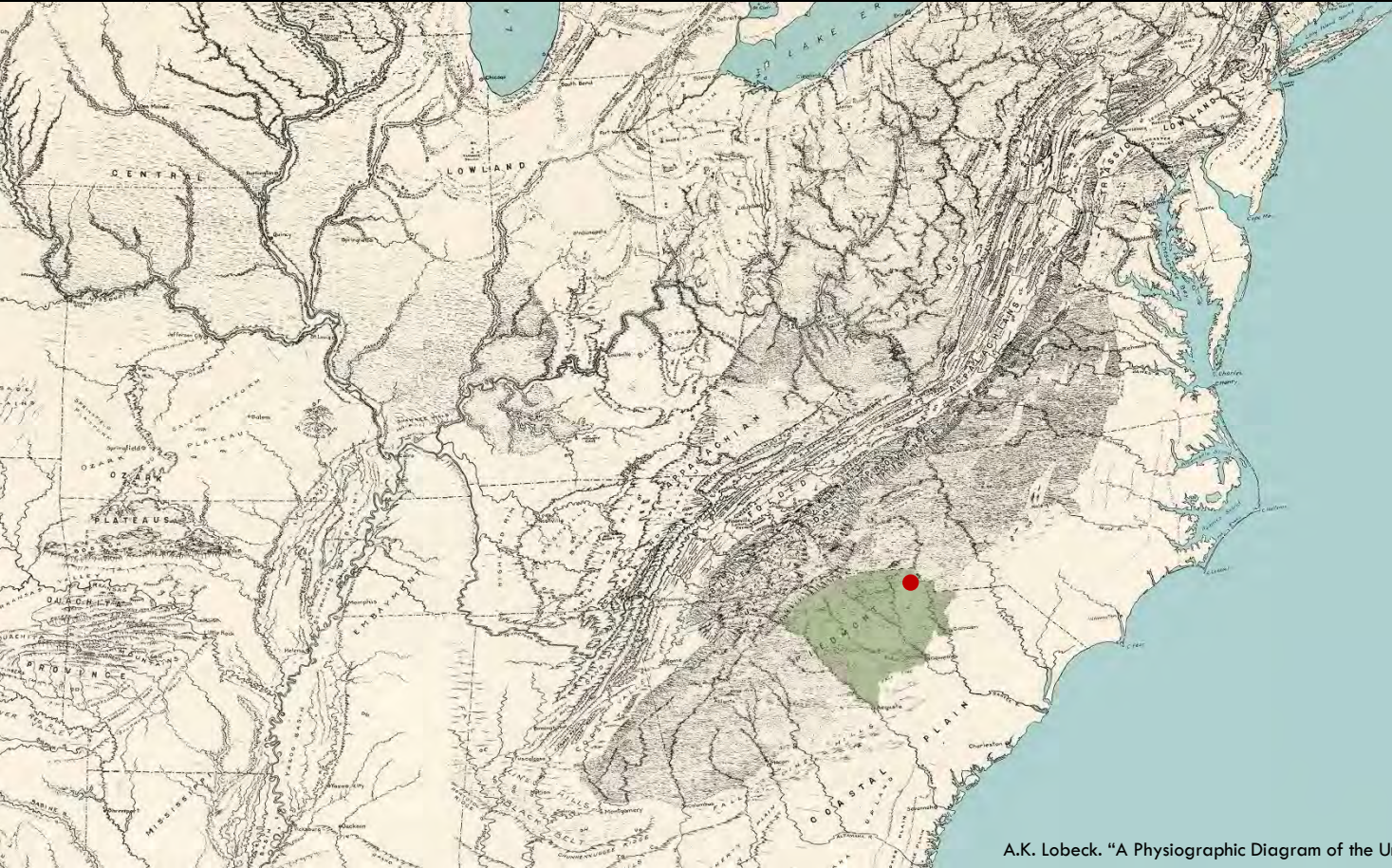


Good Maintenance Turns Tall Preservation Challenge

Stabilizing the Iconic Tower of Hightower Hall

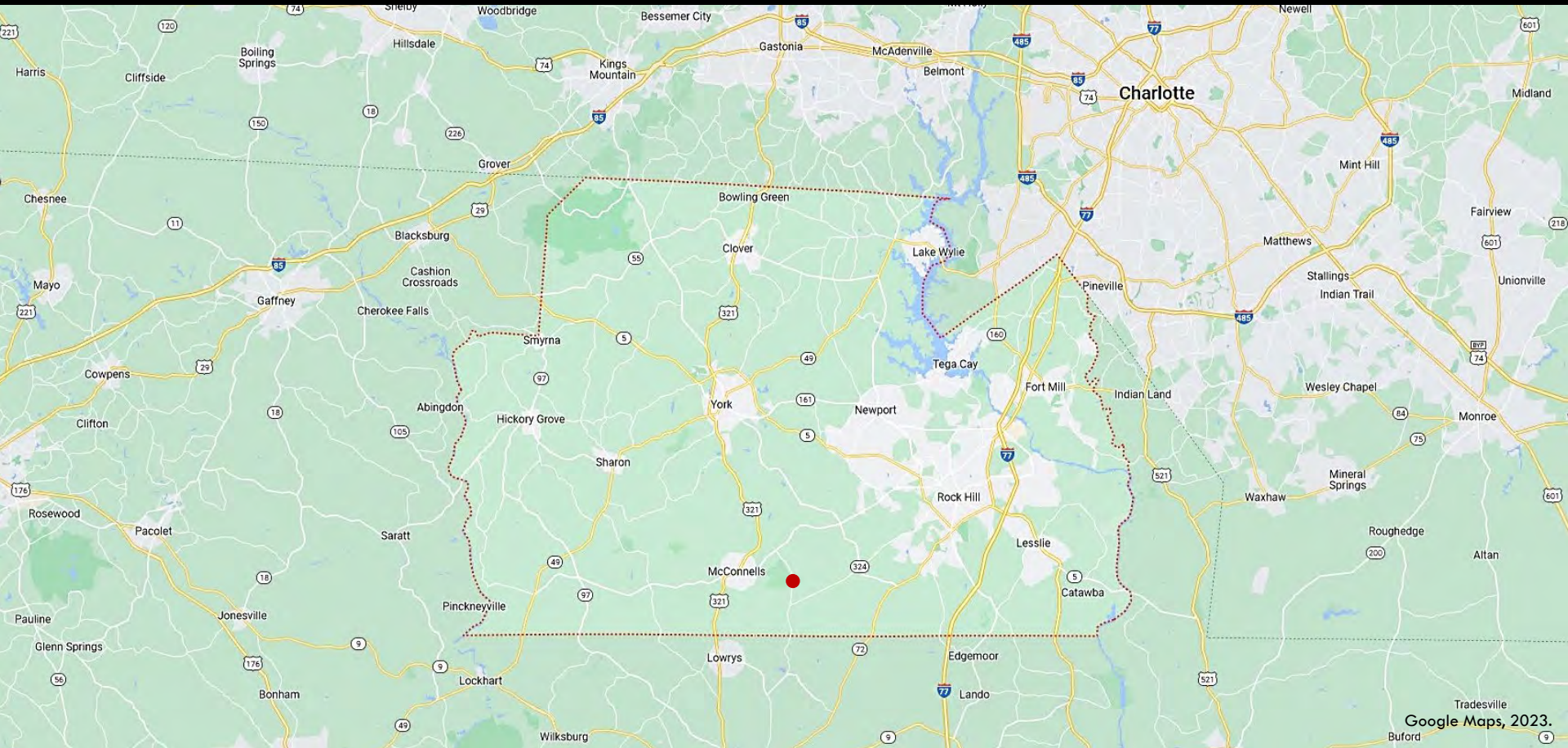


South Carolina Piedmont



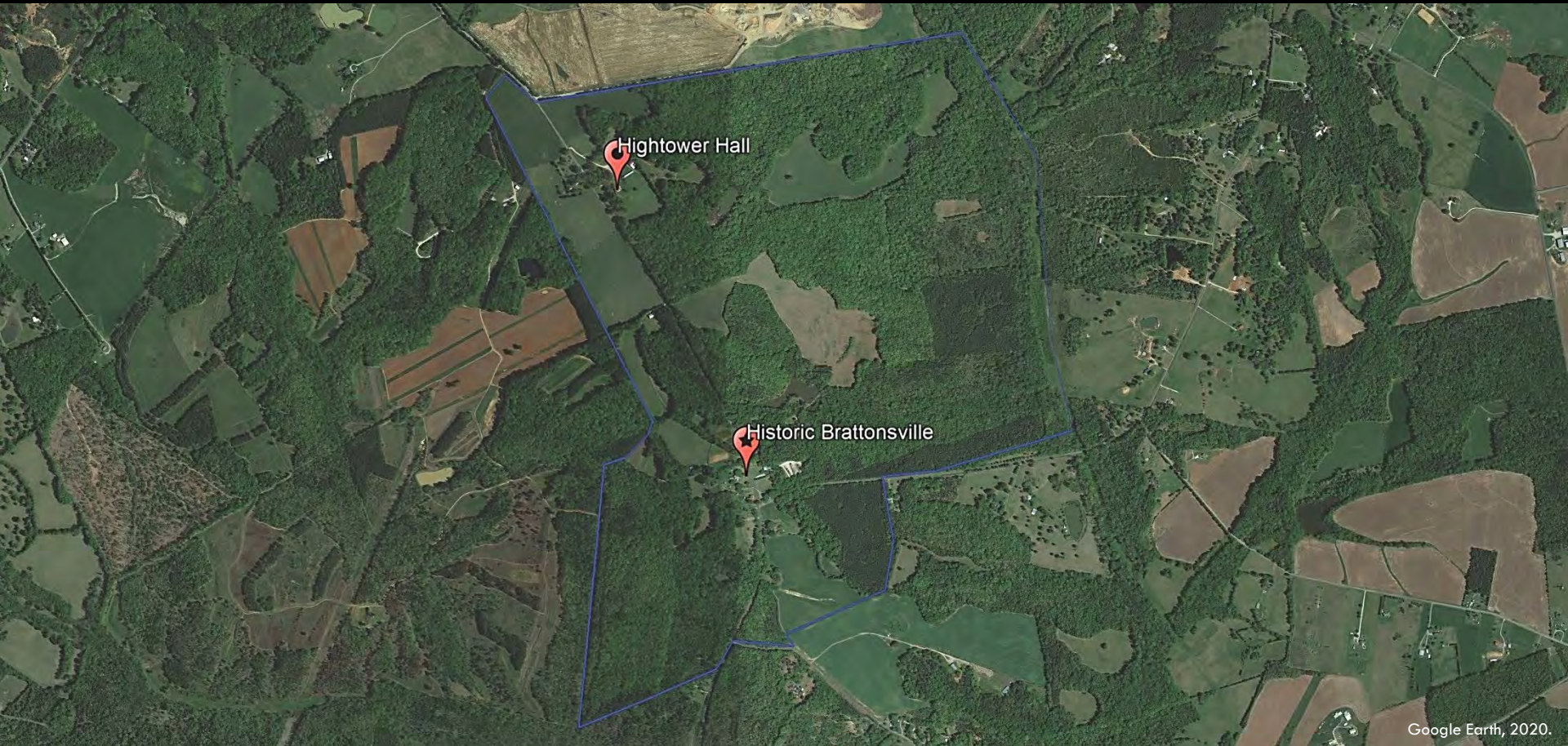
A.K. Lobeck. "A Physiographic Diagram of the United States," 1948. David Rumsey Map Collection.

York County



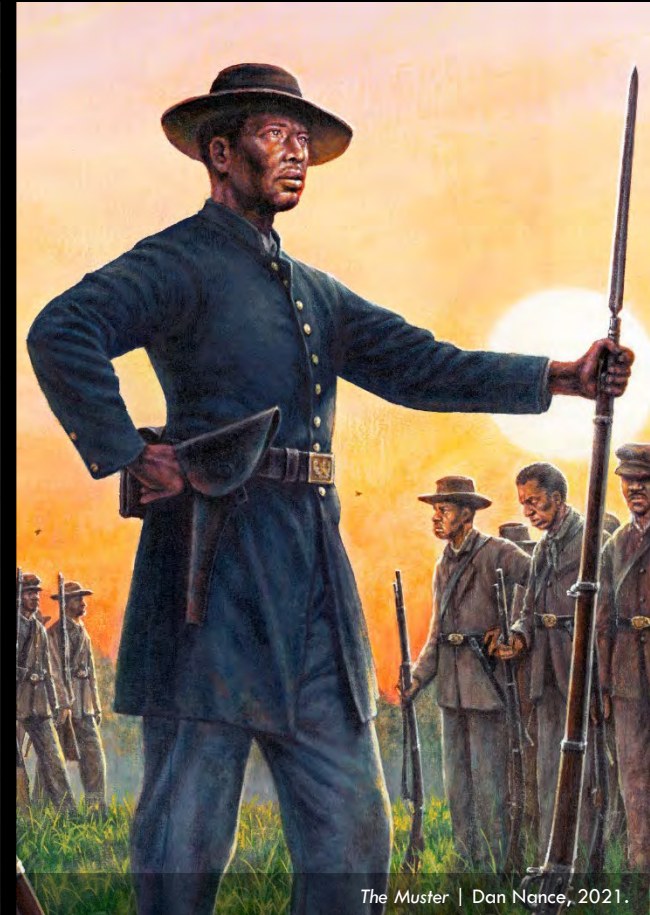
Tradesville
Google Maps, 2023.
Buford

Introduction



Google Earth, 2020.

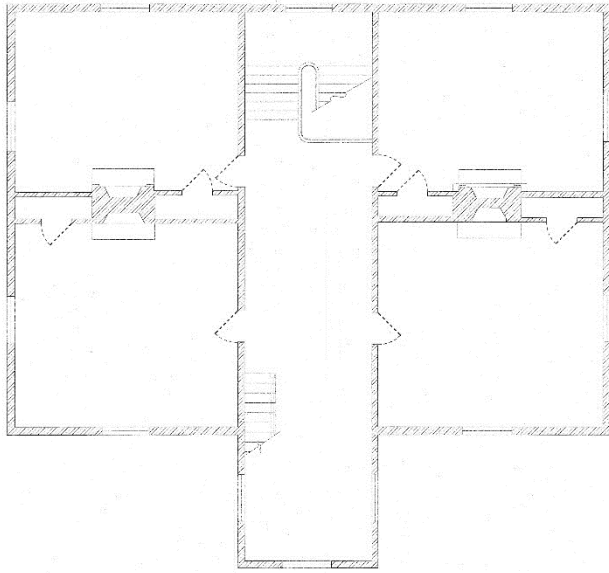
Brattonsville Through the Eras



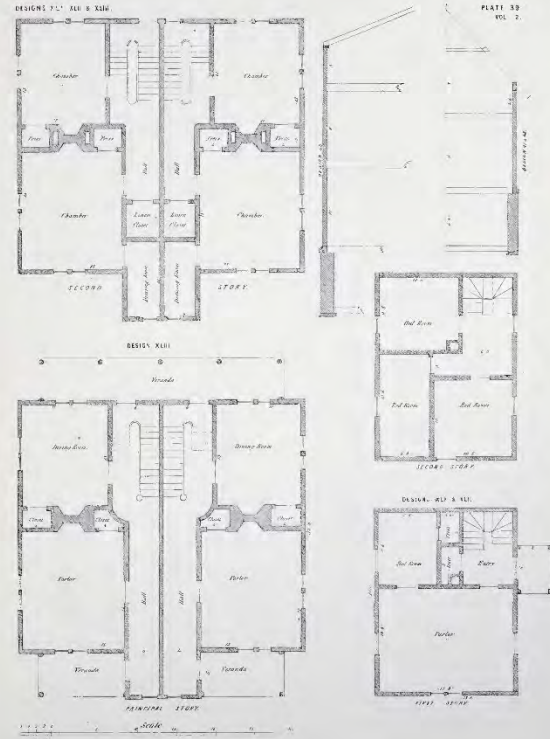
Brattonsville, circa 1840



Architectural Pattern Books



Detail from D1.3 | DP3 Architects, 2008.



William H. Ranlett, The Architect, vol. 2 (New York: Dewitt & Davenport, 1851), plate 39.

Architectural Pattern Books



Detail from A4.1 | DP3 Architects, 2008.



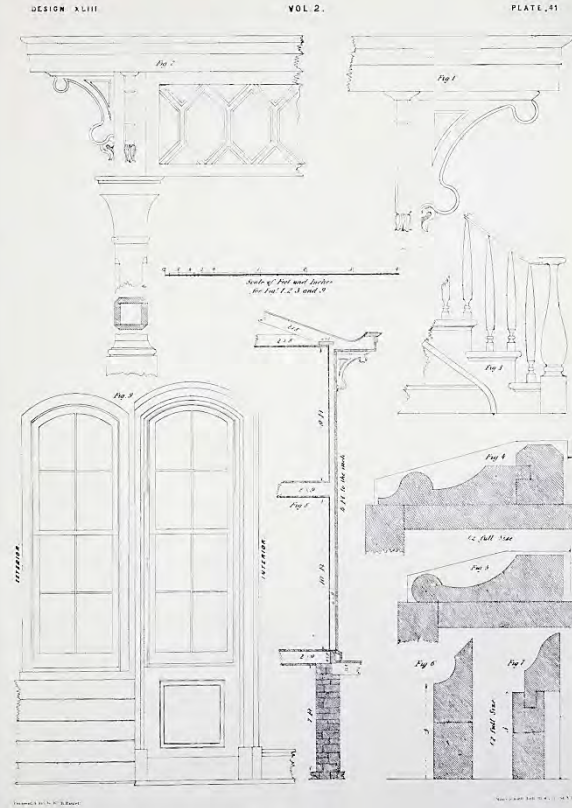
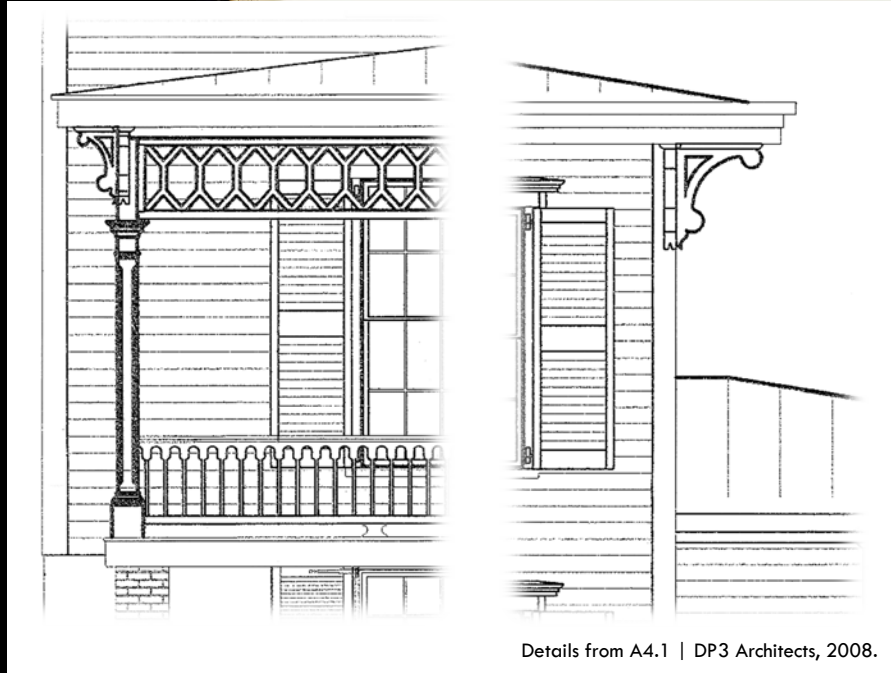
FRONT ELEVATION



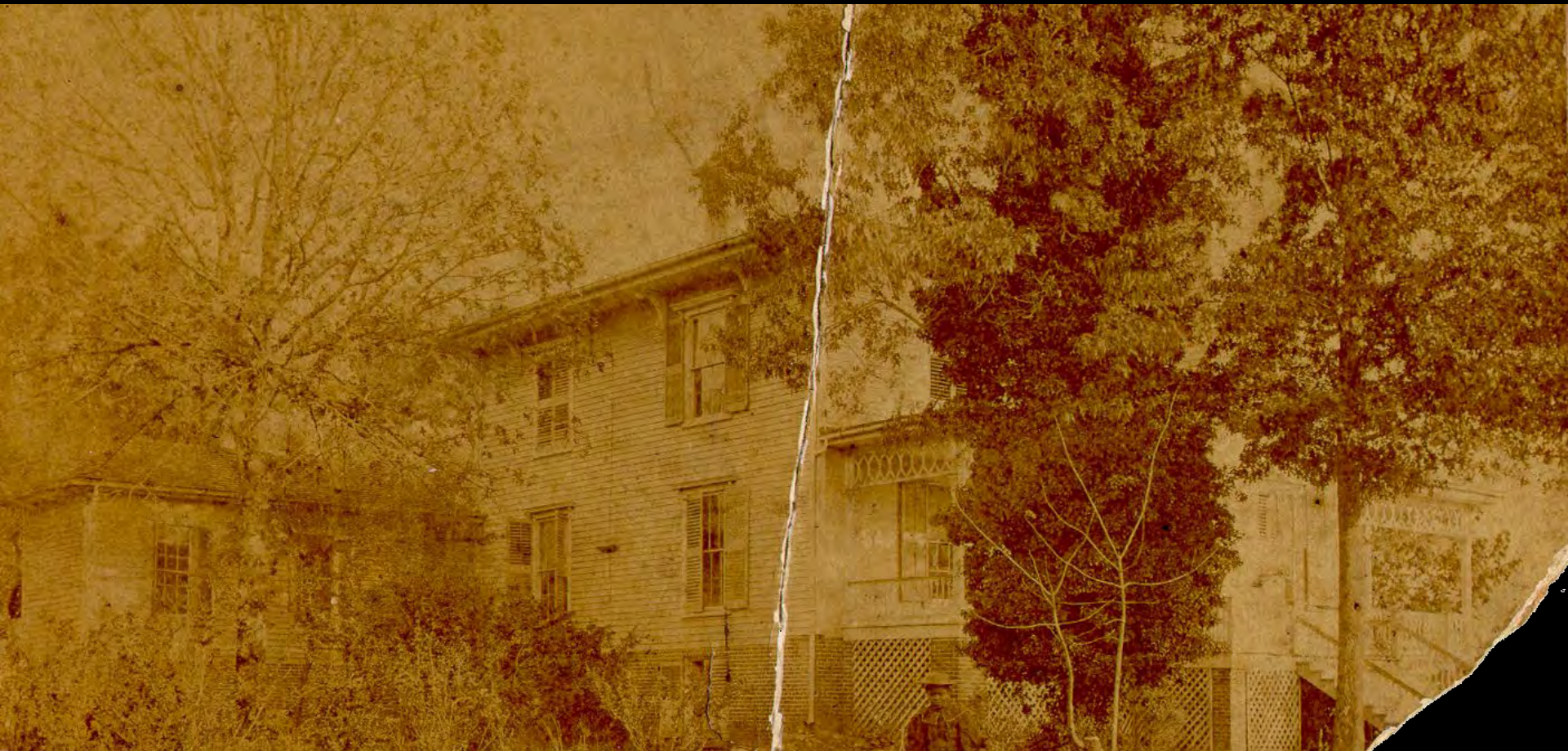
ENTRANCE ELEVATION

William H. Ranlett, *The Architect*, vol. 2 (New York: Dewitt & Davenport, 1851), plate 40.

Architectural Pattern Books



1895



2018



Tower Stabilization



Tower Stabilization



Photo credit: BPE



Courtesy of Bennett Preservation Engineering, PC

Tower Stabilization



Courtesy of Bennett Preservation Engineering, PC

Tower Stabilization



Johnson & Mester | 04.28.2023 |  Culture & Heritage Museums



Tower Stabilization



Tower Stabilization



Tower Stabilization



Tower Stabilization



Stabilizing the Iconic Tower of Hightower Hall

Tower Stabilization



Tower Stabilization



Tower Stabilization



Tower Stabilization



Tower Stabilization



Tower Stabilization



Tower Stabilization



Tower Stabilization



Finally Painting Hightower Hall



Restoration of Original Paint Scheme



Tower Stabilization



THANK YOU

Follow us at:

Preservation at Historic Brattonsville on Facebook

&

Brattonsville Preservation on Instagram

chmuseums.org/brattonsville