

A publication of the S.C. African American Heritage
Commission in collaboration with the South Carolina
Department of Archives and History

How Did we Get to Now?

Documenting African American Schools in
South Carolina from the Jim Crow Era

July 2016

Table of Contents

Aiken County	1
Allendale County	1
Bamberg County.....	1
Barnwell County	1
Calhoun County	1
Chester County.....	1
Chesterfield County.....	1
Clarendon County.....	1
Darlington County	1
Dillon County	1
Florence County	1
Kershaw County.....	1
Lancaster County	1
Marion County.....	1
Marlboro County	1
Orangeburg County	1
Sumter County.....	1
Union County.....	1
Williamsburg County	1

How Did we Get to Now?

Documenting African American Schools in South Carolina from the Jim Crow Era

One of the most compelling aspirations of the newly emancipated African Americans was to obtain an education. They saw this as a means to improve their lot and to remain free. Those in the state legislatures ushered in universal education laws while others formed education associations and built or organized schools in churches, lodges, and homes. By 1900, literacy rates rose to 50% from an estimated 5%-10% before 1865.

As Jim Crow laws cemented, African American educational access was grievously burdened by a shortage of public institutions and the inadequacy of financial support for them from local and state governments. Many black South Carolinians preferred private institutions for themselves or for their children. These private schools were supported by African Americans, philanthropic northerners associated with various religious groups. Some northern groups that had been outspoken critics of slavery during the antebellum years were also active in creating educational opportunities for the ex-slave. Southern African American individuals and associations were also instrumental in establishing private schools whose mission was to serve thousands of blacks who could not read or write. As early as 1868, the Storm Branch Educational and Missionary Association organized a school in Aiken County. The mission of this church-based group was to provide educational opportunities for black children. In 1881, Reverend Alexander Bettis founded an institute in Edgefield County. Bettis Academy, as it became known, began as a one room frame structure with one teacher and five students. Although the founding principles were primarily centered on religion, the school

also trained teachers and stressed industrial training for the largely rural based population that it served. Many educational institutions in South Carolina, and indeed, throughout the south were, however, established by whites who genuinely sought to uplift illiterate African Americans.

The effort to educate blacks was not always well received. It took place in the hostile and chaotic environment of the Reconstruction and Post-Reconstruction south, a period and place characterized by intense emotional rhetoric emanating from the recent Civil War. Evidence of destruction was to be found nearly everywhere. White southerners remained hateful and distrustful of most things northern, especially blaming military defeat and abolition of their way of life on northerners in general. Attitudes toward blacks, whether slave or free were racist. Most southerners still regarded African Americans as inferior and incapable of competitive living in a free and open society. Northern imposed coalition governments were a constant reminder of defeat and of disdain for the “old way” of life.

Educational opportunity for whites, especially the poor, was also limited, and efforts to provide such opportunities for blacks were often met with envy and direct violence. Money for support of public or private schools was meager, and southern governments were more concerned with rebuilding war torn areas than with constructing schools for their citizens. This meant that any funds made available were woefully inadequate.

South Carolina's Constitution of 1868 made public education a desegregated venture, although black and white South Carolinians preferred to be educated with members of their own race. For example, with the exception of a few integrated schools in Kershaw and Richland counties, the state public institutions were all segregated. Modest gains made by southern coalition governments (spearheaded by African American Republicans such as Robert Smalls) in establishing a public education system were reversed as white southerners regained control of their political affairs after the end of Reconstruction. Between 1877 and the turn of the century, legal segregation became the law of the land as two separate and unequal societies emerged. Under the direction of Governor Benjamin Tillman, South Carolina instituted a new Constitution which made official what was already common practice-South Carolina schools would be separated along racial lines. Article XI, Section 7 required clearly stated: *"Separate schools shall be provided for children of the white and colored races, and no child of either race shall ever be permitted to attend a school provided for children of the other race"*

This constitutional edict was re-enforced one year later by the landmark Supreme Court decision in the case of Plessy v Ferguson. Thus it was, the official era of Jim Crow segregation in public education became the unquestioned law of the land. For the next 60 years, South Carolina would have two separate school systems determined by race.

How Did we Get to Now?

This project was undertaken in collaboration with the South Carolina Department of Archives and History and the South Carolina African American Heritage Foundation. At its inception, its primary focus was to compile an inventory of extant African American schools that existed in the period roughly between 1895 and 1970. In addition to inventorying these schools, this project was to provide relevant historical and physical data to the State Historic

Preservation Office in order to evaluate their worthiness for inclusion in the National Register of Historic Places and the South Carolina Statewide Survey of Historic Properties database. Consistent with requirements of the above reference registers, the schools included in this submission was supposed to provide some or all of the following information, specifically, statements based on written, oral, physical description, historical information and photographs (when applicable). Each site was also supposed to include Latitude/Longitude coordinates (GIS) when specific addresses could be determined.

As may be the case in many projects of this nature, the actual available sources open up new research directions and give rise to many new questions. Below is a short itemization of some of the findings from this massive and somewhat inconclusive undertaking.

- Many of the schools from this era are no longer extant, although many of their names can be found in various SCAH databases (Rosenwald, Fire Insurance, etc.).
- A significant number of Jim Crow era schools operated in a quasi-public state, being supported by public, private and religious institutions.
- In an attempt to stave off any possible impact from the impending Briggs v Elliott case, the state undertook a major school construction program between 1951 and 1956. Two-thirds of the money allocated for this initiative went to African Americans schools. These "equalization" schools sprang up in heavily populated African American communities throughout the state. Many of them are in use today, having undergone some modernization. Others that are extant are in varying state of disrepair, alternate use or simply abandoned and overgrown by trees, shrubbery, etc.

- These were essentially African American neighborhood schools or they were strategically located on the edge of town or completely outside of town limits. In visiting many of these sites, one could not help but notice the blight of these old communities.

Still, much can still be gained through an extension of this project. In many cases, local residents were eager to share their experiences in these schools. Oftentimes they voiced regret about the physical demise of their old schools. More research is needed to collect more of these stories as they would provide considerable insight into the lives of many South Carolinians, both black and white. Regardless as to where they currently exist, these old African American schools are part of the legacy of this state. It is critically important to capture these physical and oral legacies before the remnants of the schools and the students who attended them are gone.

For this first edition, the SCAAHF identified properties in the following counties: Aiken, Allendale, Bamberg, Barnwell, Calhoun, Chester, Chesterfield, Clarendon, Darlington, Dillon, Florence, Kershaw, Lancaster, Marion, Marlboro, Orangeburg, Sumter, Union

and Williamsburg counties. The inventory of schools is organized in this publication by county. Other counties will be included as funding becomes available.

The experiences of African Americans in the segregated schools of the Jim Crow era are a major part of the post slavery experience of black and white Americans. Many of these schools existed in a quasi-relationship to public government. In addition to those African American schools created by such philanthropic groups as the Anna T. Jeanes Foundation, Rosenwald Foundation, and the Rockefeller Foundation, many of schools were physically sited on church, colleges and plantation property. Others existed in small rural communities with only minimal governmental oversight. Regardless as to where they existed, or who supported them, preserving their legacies is critically important in reconstructing the past of more than a third of South Carolina's population. Additionally, an increased interest in these sites has created important implications for the state tourism industry.

This publication was developed under the professional direction of Dr. Larry Watson, former professor of history at South Carolina State University.

Aiken County

Greendale Elementary

512 South Boundary Street
New Ellenton, SC 29809

Aiken County Ownership

Sections of school are still in
use



School	Location / GIS	Physical Description	Type
A.L. Corbett High School	20 A.L. Corbett Cir., Wagener, SC 29164 / 33.660797, -81.364879	Auditorium and gym still in use	
Greendale Elementary School	512 South Boundary St., New Ellenton, SC 29809 / N33.35570° W81.64872°	Sections of school are still in use	
Jefferson High School	170 Flint Dr., Warrenville, SC 29851 / 33.497615, -81.862220		
Oakwood Elementary School	3773 Charleston Hwy., Aiken, SC 29801 / 33.525343, -81.624041	Part of old structure remains in use	
Pinecrest Elementary School	1050 Pinecrest Ave., Aiken, SC 29801 / 33.574121, -81.728835	In use as learning center	
Ridge Hill Elementary School	Ridge Spring, SC	Structure still standing	Fire Insurance
Sardis Elementary School	268 Poplar Street, Salley, SC 29137 / N/33.565534, -81.298170A	In use as a YMCA/Headstart center	
Triune Elementary School	North Augusta, SC / N33.53347° W81.95317°	*No longer standing	Fire Insurance

Pinecrest Elementary

1050 Pinecrest Avenue
Aiken, SC 29801

Aiken County Ownership

In use as Center for
Innovative Learning



Allendale County

Rosenwald Colored

FAIRFAX, Allendale County



www.archivesindex.sc.gov

School	Location / GIS	Type	Register
Allendale School	N/A	Rosenwald	SHPO, National
Hardin Institute	N/A		
Bull Pond Colored	Bull Pond, SC / N32.94544° W81.39788°	Fire Insurance	
Barton Colored	Barton, SC / N32.92099° W81.29261°	Fire Insurance	
New Harmony	N/A	Fire Insurance	
Millette Colored	Millett, SC / N33.09960° W81.53705°	Rosenwald	SHPO, National
Seigling Colored	Allendale, SC / N33.04127° W81.32316°		
Allendale Colored Primary	N/A	Fire Insurance	
Allendale Colored Home Economics	N/A		
Allendale Colored Manual Training	N/A		
Allendale Colored Band Room	N/A		
Rosenwald Colored (AKA Fairfax)	Allendale County, SC / N32.85350° W81.38149°		
Sycamore Colored	N/A	Rosenwald, Fire Insurance	SHPO, National
Martin Colored	Martin, SC N33.05849° W81.46316°		
Allendale Colored Industrial (AKA James H. Hope School)	Hwy 278, Allendale, Union East, SC / N34.71375° W81.52232°	Rosenwald, Fire Insurance	SHPO, National

Mt. Calvary	near 215 Mount Calvary Church Road, Ulmer	Rosenwald	Historic Marker, National
Allendale High	N/A		
Olar Colored	N/A		
Farifax School	N/A	Rosenwald	SHPO, National
Gillette School	N/A	Rosenwald	SHPO, National
James H. Hope School (2)	N/A	Rosenwald	SHPO, National

Olar Colored

Allendale County



www.archivesindex.sc.gov

Bamberg County

Lewis Butler Elementary

139 McMillian Street
Bamberg, SC 29003



School	Location / GIS	Type	Register
Lewis Butler ES	139 McMillian St. Bamberg, SC / 33.304765, -81.038222		
Richard Carroll HS	State Road 5-196 / 33.303155, -81.038474		
Previously Identified Schools			
Carver School	Clear Pond, SC / N33.1557° W81.0957	Rosenwald, Fire Insurance	SHPO
Denmark School		Rosenwald	SHPO
Olar School	Olar, SC / N33.1715° W81.1748°	Rosenwald	SHPO
Lewis Butler Elementary	Ehrhardt, SC / N33.0882° W81.0173		
Olar Colored	N/A		
Gin's Branch Colored	N/A		
Govan Colored	N/A	Fire Insurance	
Middle Place Colored	N/A		
Oak Grove Colored	Tony Hill Bay, SC / N33.18377° W80.94454°	Fire Insurance	
Midway Colored	N/A	Fire Insurance	
Poplar Grove Colored	Tony Hill Bay, SC / N33.21877° W80.97676°	Fire Insurance	SHPO
Claflin Colored	Tony Hill Bay, SC / N33.23266° W80.89565°	Fire Insurance	SHPO

Union Colored	N/A	Fire Insurance	
Bamberg Colored	N/A	Fire Insurance	SHPO
Colston Colored	Clear Pond, SC / N33.18099° W81.07343°		
Edisto Colored	Tony Hill Bay, SC / N33.20794° W80.88176°	Fire Insurance	
Spring Branch Colored	Bamberg, SC / N33.33571° W81.04871°	Fire Insurance	
George Arm Colored	N/A		
Clear Pond Colored	Clear Pond, SC / N33.18849° W81.01260°	Fire Insurance	
Model Colored	N/A	Fire Insurance	
Ehrhardt Colored	Ehrhardt, SC / N33.09326° W81.01433°	Fire Insurance	
Coggins Grove Colored	Ehrhardt, SC / N33.11071° W81.03788°	Fire Insurance	

Richard Carroll High School

State Road 5-196
Bamberg, SC



Barnwell County

Kelly Edwards Elementary

1071 Elko Street
Williston, SC 29853



School	Location	Type	Register
Kelly Edwards ES	1071 Elko Street, Williston, SC / 33.396222, -81.396197		
Previously Identified Schools			
(Barnwell School) County Training	N/A	Rosenwald	SHPO
Ashleigh Colored	Blackville, SC / N33.29960° W81.31594°	Fire Insurance	
Ashley Grove Colored	Girard NE, SC.	Fire Insurance	
Barnwell Colored	N/A / N33.20570° W81.61928°	Fire Insurance	
Barnwell Rosenwald Colored	N/A	Fire Insurance	
Barnwell School	N/A	Rosenwald, Fire Insurance	SHPO
Barnwell Shop Colored	N/A	Fire Insurance	
Blackville Colored	N/A	Fire Insurance	
Blackville School	Blackville, SC / N33.34932° W81.25955°	Rosenwald, Fire Insurance	SHPO
Browns Chapel Colored	N/A		
Craig Pond Colored	Long Branch, SC / N33.28820° W81.48566°	Fire Insurance	
Diamond Colored	Snelling, SC / N33.17599° W81.39566°	Fire Insurance	
Elko School	N/A	Rosenwald, Fire Insurance	SHPO
Four Mile Insitute	Girard NW, SC / N33.19598° W81.71372°	Rosenwald	SHPO
Gum Pond School	New Ellenton SE, SC / N33.33126° W81.52594°	Rosenwald, Fire Insurance	SHPO

Jordan Baptist Colored	Snelling, SC / N33.18043° W81.43900°	Fire Insurance	
Kline Colored	N/A	Fire Insurance	
New Hope	N/A	Rosenwald, Fire Insurance	SHPO
Parks Colored	N/A	Fire Insurance	
Spring Branch Colored	N/A	Fire Insurance	
St. Mary's Colored	N/A	Fire Insurance	
St. Mary's School	N/A	Rosenwald, Fire Insurance	SHPO
St. Matthews Colored	N/A	Fire Insurance	
Thomas Grove Colored	Girard NE, SC / N33.19293° W81.50844°	Fire Insurance	
Union Branch Colored	New Ellenton SW, SC / N33.26737° W81.63844°	Fire Insurance	
Williston Colored	N/A		

Calhoun County

Guinyard Elementary

125 Herlong Avenue
St. Matthews, SC 29135

Marquee remains



SCHOOL	LOCATION / GIS	Type	Register
Guinyard Elementary	125 Herlong Avenue, St. Matthews, SC 29135 / 33.548831, -80.698022		
John Ford H S	300 Agnes Street, St. Matthews, SC 29135 / 33.669618, -80.779117		
St. John's Elementary / High School	St. John Church Road, Cameron, SC 29030 / 33.670984, -80.785683		

John Ford High School

300 Agnes Street
St. Matthews, SC 29135

Remnants in public use



Chester County

School	Address	Physical Description	Type	Register
Blackstock School	Undefined	Undefined		
Chester School (County Training School)	Undefined	2-story building/Current description is undefined		
Fishing Creek School	Steele Village Road, Chester, SC 29706	Single Story white building with chimney/Church and cemetery now resides on land		
Shop at County Training	Undefined	2-story building		

Fishing Creek School

Steele Village Road
Chester, SC 29706

Under state ownership



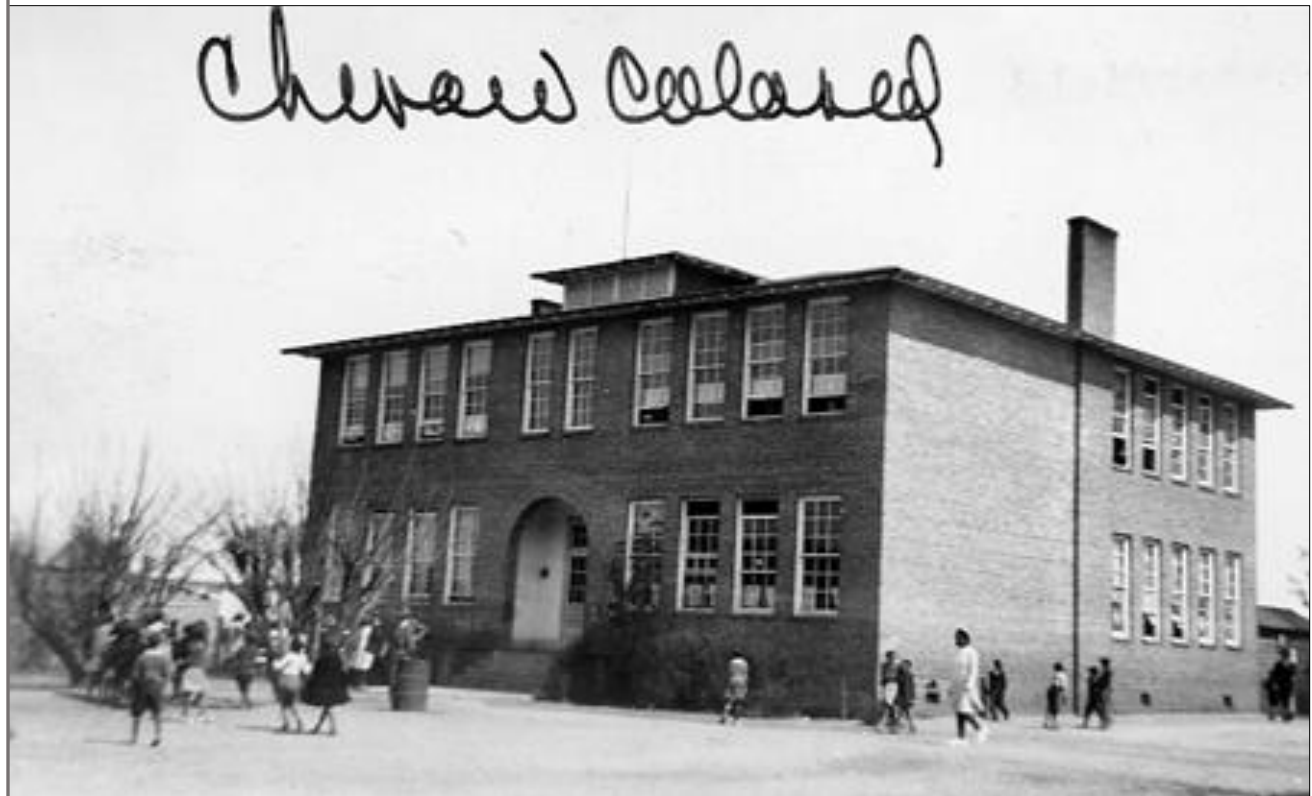
www.archivesindex.sc.gov

Chesterfield County

Cheraw School (Academy)

321 High Street
Cheraw, SC 29520

No longer standing



www.archivesindex.sc.gov

School	Location / GIS	Physical Description	Type	Register
Black Creek School	Black Creek Church Rd Mt. Croghan SC 29727 / 34.700874, -80.310482	Single Story white building with one chimney/Home currently resides on land	Rosenwald, Fire Insurance	SHPO
Center School	Undefined	Single Story white building windows in front, with one chimney/Current location is undefined	Rosenwald, Fire Insurance	SHPO
Cheraw School (Academy)	321 High St, Cheraw SC 29520 / 34.696903, -79.895200	Large two story brick building with a lot of windows on front and a chimney/No longer exist is currently a field	Rosenwald, Fire Insurance	SHPO
Jefferson School	Undefined	Semi large white building with four chimneys and trees surrounding the front/No longer exist and location is undefined	Rosenwald, Fire Insurance	SHPO
Macedonia School	Angelus Road Jefferson SC off State Rd S-13-765 / 34.5918209, -80.3350685	Small white building with two chimneys and a lot of windows on the side/building still standing old brown black wood remians	Rosenwald, Fire Insurance	SHPO
McBee School	Undefined	White building with a lot of windows in the front and three chimneys/No longer exist and locatoin is undefined	Rosenwald, Fire Insurance	SHPO
Mt. Elon School	Intersection of Leaird, Catarrah, and Raley Rd Jefferson, SC 29718 / 34.576543, -80.3350689	Small white building one chimney/Trees reside on land but there is a church with the same name	Rosenwald, Fire Insurance	SHPO
Patrick School	Undefined	Small white building with one chimney/No longer exist and location is undefined	Rosenwald, Fire Insurance	SHPO

Salem School	Undefined	Undefined	Rosenwald	
Teachers' Home Cheraw School	Undefined	Small building with two chimneys and a pointed top/No longer exist and location is undefined	Rosenwald, Fire Insurance	SHPO
Timmsonville School	State Hwy S-13-34 Chesterfield, SC 29709 / 34.786822, -80.1711742	No longer exist	Rosenwald	
Wesley Chapel School	Undefined	Arthur Brewer tore down the Wesley Chapel School and built his house on the foundation.	Rosenwald, Fire Insurance	SHPO

Jefferson School

Chesterfield County /
Location currently undefined



www.archivesindex.sc.gov

Clarendon County

School	Location	Physical Description	Type	Register
Manning Training School	located on West Boyce Street in Manning/ Weinburg Dr Manning, SC 29102 / 33.695885, - 80.218057	Now in a residential area	Rosenwald	
Mt. Zion School	6417 M W Rickenbaker Rd Summerton, SC 29148 / 33.534597, -80.245397	No longer standing	Rosenwald	SHPO
St. Mark School	Alderman Camp Rd Alcolu, SC 29001 / 33.743848, -80.150183	No longer standing	Rosenwald	

Darlington County

Butler High School

1103 S 6th Street
Hartsville, SC 29550

Under state ownership



School	Location / GIS	Type	Register
Butler HS	1103 S 6th Street, Hartsville, SC / 34.359364, -80.069749		SHPO
(Hartsville School) County Training	Undefined / 34.367228, -80.071813	Rosenwald, Fire Insurance	SHPO
Cherry Grove School	552 E Billy Farrow Hwy Darlington, SC 29532 / 34.3232096, -79.9381196	Rosenwald, Fire Insurance	SHPO
Kelley Bell School	2901-3005 Kelleytown Rd. Hartsville SC 29550 / 34.3473762, -80.1600689	Rosenwald, Fire Insurance	SHPO
Mayo School	405 Chestnut St, Darlington, SC 29532 / 34.292012, -79.869583	Rosenwald, Fire Insurance	SHPO
Mt. Tema School	1629-1921 Tema Rd. Hartsville, SC 29550 / 34.320190, -80.125715	Rosenwald, Fire Insurance	SHPO
Wesley's Chapel School	1421 E Lydia Hwy Hartsville, SC 29550 / 34.2957091, -80.0208985	Rosenwald, Fire Insurance	SHPO
St. Johns School	Darlington		

Mayo School

405 Chestnut Street
Darlington, SC 29532

Under state ownership



Dillon County

Dillon Colored

S. 9th Avenue at E. Dillon
Street
Dillon, SC 29536

Under state ownership



www.archivesindex.sc.gov

School	Location / GIS	Type	Register
Bermuda School	2560-2698 Bryant Rd Dillon, SC 29536 / 34.3657171, -79.2783776	Rosenwald, Fire Insurance	SHPO
Bethea's Chapel School	199-237 Dothan Rd Dillon, SC 29536 / 34.4154391, -79.4297713	Rosenwald, Fire Insurance	SHPO
Canaan School (Mitchell)	1110-1124 Arnette Rd Dillon, SC 29536 / 34.4290514, -79.2442082	Rosenwald	
Carolina # 3 School	4101-4115 McInnis Loop Little Rock, SC 29567 / 34.5734953, -79.4372697	Rosenwald	
Dalcho School	1501-1531 Catfish Church Rd Latta, SC 29565 / 34.3657159, -79.4936634	Rosenwald, Fire Insurance	SHPO
Dillon School	S. 9th Ave at East St Dillon, SC 29536	Rosenwald, Fire Insurance	SHPO
Fork School	1 st Loop Rd Fork, SC 29543 / 34.413146, -79.382918	Rosenwald, Fire Insurance	SHPO
Hamer Kentyre School	403-597 State Road S-17-335 Hamer, SC 29547 / 34.4801627, -79.3164323	Rosenwald, Fire Insurance	SHPO
Harlee School	2505-2511 Sandpiper Dr Harlee, SC 29547 / 34.495996, -79.3689341	Rosenwald, Fire Insurance	SHPO
High Hill School	2158-2252 Hayestown Rd Lake View, SC 29563 / 34.3565504, -79.2564325	Rosenwald	
Kemper School	1151-1205 Kemper Church Rd Nichols, SC 29581 / 34.308218, -79.19143	Rosenwald, Fire Insurance	SHPO
Lake View School	Undefined	Rosenwald, Fire Insurance	SHPO
Latta School (County Training School)	Undefined	Rosenwald	

Little Rock School	1704-1706 State Road 17-116 Little Rock, SC 29567 / 34.4784956, -79.4047692	Rosenwald, Fire Insurance	SHPO
Minturn School # 6	1732-1898 Minturn Rd Minturn, SC 29536 / 34.5132177, -79.4758827	Rosenwald, Fire Insurance	SHPO
Oak Grove School	2417-2447 Cattle Farm Rd Latta, SC 29565 / 34.3412704, -79.5317206	Rosenwald, Fire Insurance	SHPO
Pine Hill School	2200-2292 Centerville Rd Latta, SC 29565 / 34.4382169, -79.4858842	Rosenwald	
Pleasant Hill School	Skillet Road S-17-29 Latta, SC 29565 / 34.394068, -79.475350	Rosenwald, Fire Insurance	SHPO

Fork Colored School

1st Loop Road
Fork, SC 29543

Under state ownership



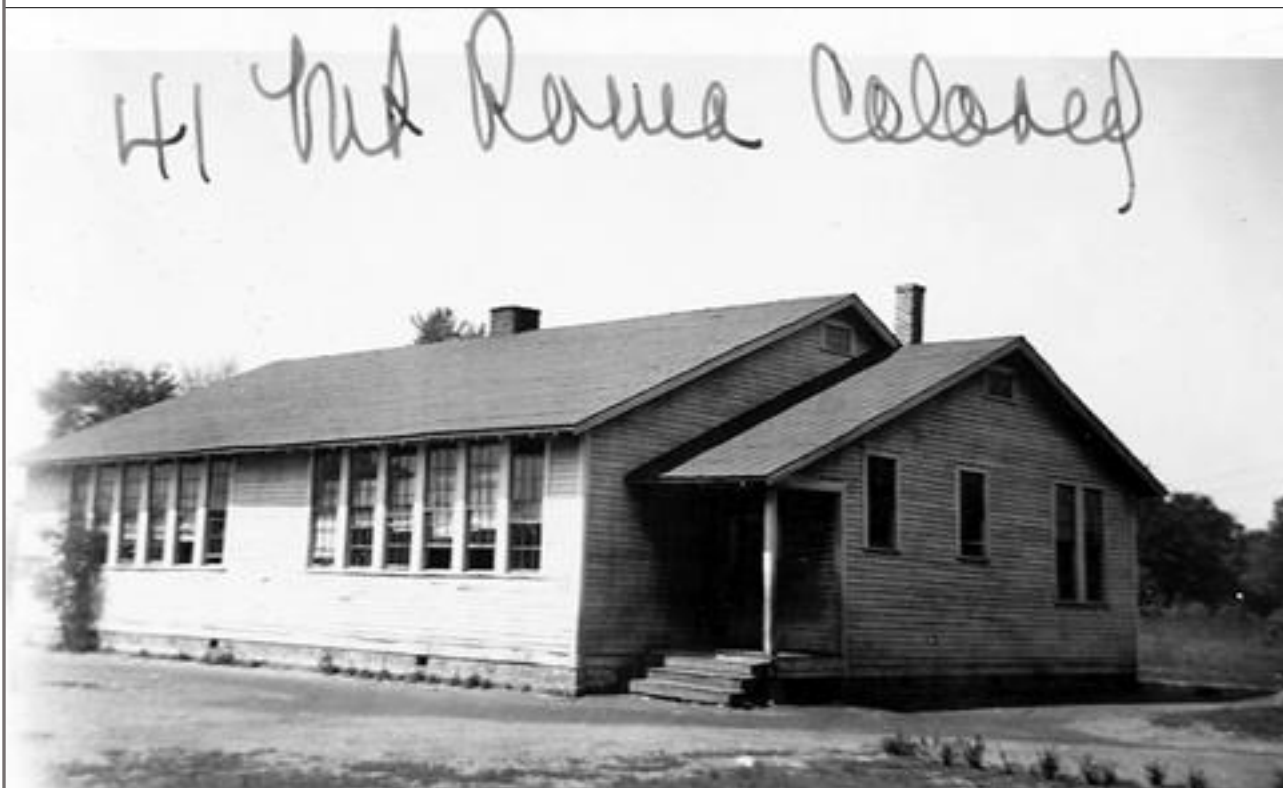
www.archivesindex.sc.gov

Florence County

Mt. Rona School

8146-8170 State Road S-21-
34
Effingham, SC 29514

Under state ownership



www.archivesindex.sc.gov

School	Location / GIS	Type	Register
Ebenezer School	1012 S Ebenezer Rd Florence, SC 29501 / 34.1745998, -79.8522863	Rosenwald	
Evergreen School	4110 Planer Rd. Effingham, SC 29514 / 34.0687708, -79.6772848	Rosenwald, Fire Insurance	SHPO
Florence County High School	Undefined	Rosenwald	
Johnsonville School	Undefined	Rosenwald, Fire Insurance	SHPO
Lake City School	Undefined	Rosenwald, Fire Insurance	SHPO
Long Branch School	3115 W John Paul Jones Rd Effingham, SC 29514 / 34.0859912, -79.8472884	Rosenwald	
Mars Bluff School	5040 Liberty Chapel Rd Florence, SC 29506 / 34.180484, -79.648183	Rosenwald, Fire Insurance	SHPO, NR
Meadow Prong School	Undefined	Rosenwald	
Mill Branch School	1199 State Road S-21-46 Pamplico, SC 29583 / 34.0787714, -79.5803368	Rosenwald, Fire Insurance	SHPO
Mt. Rona School	8146-8170 State Road S-21-34 Effingham, SC 29514 / 33.998522, -79.682580	Rosenwald, Fire Insurance	SHPO
Olanta School	Undefined	Rosenwald, Fire Insurance	SHPO
Othello School	Intersection of N Old Georgetown Rd & State Rd S-21-721 SC / 34.0240494, -79.737287929530	Rosenwald, Fire Insurance	SHPO
Pamplico School	Undefined	Rosenwald, Fire Insurance	SHPO

Salem School	2060 McAllister Mill Rd Scranton, SC 29591 / 33.9551612, -79.8039568	Rosenwald, Fire Insurance	SHPO
Savannah Grove School	Undefined	Rosenwald, Fire Insurance	SHPO
Shop at County High School	Undefined	Rosenwald	
Shop at Wilson High School	Undefined	Rosenwald	
St. Mark School	Undefined	Rosenwald, Fire Insurance	SHPO
Summerville School	State Rd S-21-24 Florence, SC 29506 / 34.215949, -79.615049	Rosenwald	
Tabernacle School	Near intersection of Charlie Cade Rd and Francis Marion Rd Effingham, SC 29541 / 34.054327, -79.6497841	Rosenwald	
Tans Bay School	Between W John Paul Jones Rd and State Rd S-21-35 Effingham, SC 29541 / 34.123228, -79.787862	Rosenwald	
Tans Bay School # 2	Between W John Paul Jones Rd and State Rd S-21-35 Effingham, SC 29541 / 34.123228, -79.787862	Rosenwald, Fire Insurance	SHPO
Timmsonville School	Undefined	Rosenwald, Fire Insurance	SHPO
Vox School	506 Chestnut Rd Johnsonville, SC 29555 / 33.804672, -79.539789	Rosenwald, Fire Insurance	SHPO

Salem Colored School

260 McAllister Mill Road
Scranton, SC 29591

Under state ownership



www.archivesindex.sc.gov

Kershaw County

Mt. Joshua School

1972 Longtown Road
Lugoff, SC 29078

Under state ownership



School	Location	Type	Register
Cantey Hill School	Camden		
Hickman	1680 Perkins Road, Cassatt, SC 29032 / 33.898948, -80.344548		
Mickle School	1264 Wateree Dam Rd., Kershaw County, SC 29130 / 34.315402, -80.720600	Rosenwald, Fire Insurance	SHPO
Mt. Joshua School	1972 Longtown Rd., Lugoff, SC 29078 / 34.301948, -80.741159	Rosenwald, Fire Insurance	SHPO
Mt. Zion School	1533 Old Stagecoach Rd Camden, SC 29020 / 34.293417, -80.486488	Rosenwald, Fire Insurance	SHPO
Red Hill School	2405 Running Fox Road Camden SC 29020 / 34.424345, -80.739397	Rosenwald, Fire Insurance	SHPO
St. Matthews School	Undefined	Rosenwald, Fire Insurance	SHPO

St. Matthews Road School

Location undefined

No longer in existence



www.archivesindex.sc.gov

Lancaster County

School	Location	Type	Register
Cedar Creek School	5828-5842 Mt. Carmel Rd Heath Springs, SC 29058 / 34.5515358, -80.8153542	Rosenwald	
Heath Springs School	209 S College St Heath Springs, SC 29058 / 34.5904285, -80.6725718	Rosenwald	
Kershaw School	Undefined	Rosenwald	
Lancaster County Training School	Undefined	Rosenwald	
Mt. Carmel School	4336 Mt. Carmel Rd Heath Springs, SC 29058 / 34.5970921, -80.7784065	Rosenwald	
Rose Hill School	Undefined	Rosenwald	
Steele Hill School	0.5 Miles North of Steele Hill AME Zion on Hwy 521 Lancaster, SC 29720 / 34.893493, -80.799895	Rosenwald	
Teachers' Home at Lancaster School	Undefined	Rosenwald	

Marion County

Centenary School

State Road S-34-254
Marion, SC 29571



School	Location	Rosenwald	Register
Centenary	State Road S-34-254, Marion, SC 29571 / 34.0287743, -79.3594948		
Terrell Bay	SC Hwy. 9, Marion, SC 29571		
Previously Identified Schools			
Bethel School	Undefined	Rosenwald, Fire Insurance	SHPO
Blackwell School	Undefined	Rosenwald, Fire Insurance	SHPO
Cedar Grove School	1603 Blue Brick Rd Marion, SC 29571 /34.2026592, -79.5058884	Rosenwald	No
Centenary School	State Road S-34-254 Marion, SC 29571 / 34.0287743, -79.3594948	Rosenwald, Fire Insurance	SHPO
County Training School	Undefined	Rosenwald, Fire Insurance	SHPO
Friendship School	591 Hwy 9 Gresham, SC 29546 / 33.9918299, -79.4178311	Rosenwald, Fire Insurance	SHPO
Gresham School	Undefined	Rosenwald	No
Melvin Field School	Undefined	Rosenwald, Fire Insurance	SHPO
Mullins School	Undefined	Rosenwald, Fire Insurance	SHPO
Nichols School	Undefined	Rosenwald, Fire Insurance	SHPO

Old Field School	5046-5104 Jackson Farm Ct Mullins, SC 29573 / 34.2479387, -79.2267108	Rosenwald, Fire Insurance	SHPO
Pee Dee School	Pee Dee School Rd Marion, SC 29571 / 34.2073811, -79.5228333	Rosenwald, Fire Insurance	SHPO
Pleasant Grove School	Undefined	Rosenwald, Fire Insurance	SHPO
Rains School	Undefined	Rosenwald, Fire Insurance	SHPO
Sellars School	Undefined	Rosenwald, Fire Insurance	SHPO
Singletary School	Undefined	Rosenwald, Fire Insurance	SHPO
Smiths Swamp School	US 76 Mullins, SC 29574 / 34.187383, -79.3336599	Rosenwald, Fire Insurance	SHPO
Spring Branch School	US 501 Marion, SC 29571 / 34.243215, -79.4003288	Rosenwald, Fire Insurance	SHPO
St. James School	5421 S Carolina 41 Marion, SC 29571 / 34.0609964, -79.3139372	Rosenwald, Fire Insurance	SHPO
St. Mary's School	Undefined	Rosenwald, Fire Insurance	SHPO
St. Paul School	Undefined	Rosenwald, Fire Insurance	SHPO
Tabernacle School	Hwy 9 Marion, SC 29571 / 34.0698841, -79.427831	Rosenwald, Fire Insurance	SHPO
Zion School	3200-4568 State Road S-34-303 Mullins, SC 29574 / 34.2601599, -79.3128255	Rosenwald, Fire Insurance	SHPO

Terrell Bay School

SC Hwy. 9
Marion, SC 29571



Marlboro County

Bennettsville School

Location undefined
Marlboro County



www.archivesindex.sc.gov

School	Location	Type	Register
Bennettsville School	Undefined	Rosenwald, Fire Insurance	SHPO
Blenheim School	143 Highland St, Blenheim, SC 29516 / 34.507729, -79.657540	Rosenwald, Fire Insurance	SHPO
Brightsville School	SC-79 Bennettsville SC 29512 / 34.718769, -79.680059	Rosenwald	
Clio Graded School	2635 SC-9, Clio, SC 29525 / 34.568437, -79.536954	Rosenwald	
Drake School	499 Drake Rd Blenheim, SC 29516 / 34.471246, -79.652015	Rosenwald, Fire Insurance	SHPO
Dunbar School	Hebron Dunbar Rd Clio, SC 29525 / 34.537171, -79.558118	Rosenwald, Fire Insurance	SHPO
Key School	Hwh 38 S Blenheim, SC 29516 / 34.441781, -79.627258	Rosenwald, Fire Insurance	SHPO
Lester School	819 State Rd. S-35-525 Bennettsville SC 29512 / 34.671229, -79.661501	Rosenwald, Fire Insurance	SHPO
McColl Grove School	3653 State Rd. S-35-34 McColl, SC 29570 / 34.664834, -79.528953	Rosenwald, Fire Insurance	SHPO
Pineville School	1610 State Rd. S-35-165 Bennettsville SC 29512 / 34.758653, -79.732966	Rosenwald	
Roper Grove School	Aaron Temple Church Rd. Bennettsville SC 29512 / 34.716602, -79.740356	Rosenwald	
St. Mark's School	Willamette Rd. Bennettsville SC 29512 / 34.609813, -79.763440	Rosenwald	
White's Creek School	Pleasant Hill Rd. Wallace SC, 29596 / 34.790064, -79.800075	Rosenwald, Fire Insurance	SHPO

McColl Grove Colored School

3653 State Road S-35-34
McColl, SC 29570



www.archivesindex.sc.gov

Orangeburg County

Bethune Bowman Elementary

131 Popular Street
Bowman, SC 29018

In use as a municipal
complex



School	Location	Type	Register
Bethune ES	131 Popular, St. Bowman, SC 29018/ 33.350901, -80.687694		
Carver ES and HS	2018 Carver Road, Cordova, SC / 33.399978, -80.956784		
Cordova School (Prince Institute)	349 Elder Branch Road, Cordova, SC 29039 / 33.425926, -80.949593	Fire Insurance	SHPO
Dover ES and HS	1411 Bedford Ave, North, SC 29112 / 34.412185, -80.342395		
Elloree Training ES	264 Learning Road, Elloree, SC / 33.526280, -80.589085		
Nix ES	770 Stilton Road, Orangeburg, SC 29115 / 33.516199, -80.841636		
Norfield ES and HS	522 Winchester, Norway, SC / 33.446235, -81.128233		
Roberts ES	1246 Unity, Holly Hill, SC / 33.324637, -80.405895		
Roberts HS	1275 Cribb Street, Holly Hill, SC / 33.324637, -80.405895		
St. James ES	1555 Garden Gate Road, Eutawville, SC / 33.388767, -80.333360		
Whittaker ES	790 Whitaker Parkway, Orangeburg, SC 29115 / 33.493433, -80.835900		
Wilkinson HS	1255 Belleville Road, Orangeburg, Sc 29115 / 33.500690, -80.840581		

PREVIOUS IDENTIFIED SCHOOLS

Bowman School	1189-1191 Bowman Branch Hwy Bowman SC 29018 / 33.3429, -80.68706666	Rosenwald, Fire Insurance	SHPO
East Middle Colored School	Undefined	Rosenwald, Fire Insurance	SHPO
Edisto School	Midway SC (Undefined) / 33.2996024, -80.8995404	Rosenwald	
Enterprise School	2301 State Rd. S-38-28 Bowman SC 29018 / 33.326467, -80.577970	Rosenwald	
Enterprise School #2	2301 State Rd. S-38-28 Bowman SC 29018 / 33.326467, -80.577970	Rosenwald	
Flora Branch School	586 Begiona Rd. North SC 29112 / 33.580100, -81.177124	Rosenwald, Fire Insurance	SHPO
Great Branch School	2890 Neeses Highway / 33.523339, -81.002607	Rosenwald, Fire Insurance	SHPO
Holly Hill School	787 Rush Street Holly Hill SC 29059 / 33.327842, -80.403757	Rosenwald, Fire Insurance	SHPO
Jamison School	Undefined	Rosenwald	
Jenkins School	Undefined	Rosenwald, Fire Insurance	SHPO
Orangeburg County High School	Undefined	Rosenwald	
Orangeburg School (County High)	783 Golf Ave Orangeburg SC 29115 / 33.500648, -80.852090	Rosenwald, Fire Insurance	SHPO

Rocky Swamp School	7066 Norway Rd. Neeses SC 2929107 / 33.474824, -81.187324	Rosenwald, Fire Insurance	SHPO
Rowesville School	129 Railroad Ave, Rowesville, SC 29133 / 33.367845, -80.829795	Rosenwald, Fire Insurance	SHPO
Springfield School	260 Tammaron Ln Springfield SC 29146 / 33.495757, -81.274124	Rosenwald, Fire Insurance	SHPO
Teachers's Home at Great Branch School	2890 Neeses Highway Orangeburg SC 29115 / 33.523366, -81.002569	Rosenwald, Fire Insurance	SHPO, NR
Teachers' Home at Training School	300 College St NE, Orangeburg, SC 29115 / 33.497402, -80.850849	Rosenwald, Fire Insurance	SHPO
Training School State College (Felton)	300 College Ave, Orangeburg, SC 29115 / 33.497315, -80.850538	Rosenwald, Fire Insurance	SHPO, NR

Nix Elementary

770 Stilton Road
Orangeburg, SC 29115

In use as Nix Education
Center and adjacent to the
James E. Clyburn University
Transportation Center.



Sumter County

Providence Colored School

4035-4099 Dodgen Hill Road
Dalzell, SC 29040



www.archivesindex.sc.gov

School	Location	Type	SHPO
Bracey School	2565 U.S 15 Sumter SC 29150 / 33.849802, -80.367888	Rosenwald	
Catchall and John Spann School	2730 Peach Orchard Rd. Dalzell SC 29040 / 34.000091, -80.494860	Rosenwald, Fire Insurance	SHPO
Chandler School	2107-2185 E Brewington Rd. Sumter SC 29153 / 33.941217, -80.258440	Rosenwald, Fire Insurance	SHPO
Green School	Undefined	Rosenwald, Fire Insurance	SHPO
High Hill School	Highway 261 near Beech Creek and Golf Course Road, near 278	Rosenwald, Fire Insurance	SHPO
Providence School	4035-4099 Dodgen Hill Rd. Dalzell SC 29040 / 34.027741, -80.472747	Rosenwald, Fire Insurance	SHPO
Rafting Creek School	4170 N Kings Hwy Rembert SC 29128 / 34.052166, -80.544375	Rosenwald, Fire Insurance	SHPO
Shop at Sumter High School	2580 McCrays Mill Rd Sumter SC 29154 / 33.897832, -80.391803	Rosenwald	
St. John School	Undefined	Rosenwald, Fire Insurance	SHPO
Statesburg School	160 N Kings Hwy. Sumter SC 29154 / 33.950370, -80.529849	Rosenwald, Fire Insurance	SHPO
Stone Hill School	771-799 U.S. 15 Sumter SC 29150 / 33.902286, -80.336813	Rosenwald, Fire Insurance	SHPO
Sumter High School	2580 McCrays Mill Rd Sumter SC 29154 / 33.897832, -80.391803	Rosenwald, Fire Insurance	SHPO
Winn School	91-99 Community Street Sumter SC 29150 / 33.937851, -80.365160	Rosenwald, Fire Insurance	SHPO
Wolf Bay School	730 Camp Branch Rd Sumter SC 29153 / 33.898362, -80.261245	Rosenwald, Fire Insurance	SHPO

Statesburg Colored School

160 N. Kings Hwy.
Sumter, SC 29154



www.archivesindex.sc.gov

Union County

Cedar Grove Colored

Jonesville, Union County



www.archivesindex.sc.gov

School	Location	Type	SHPO Register
*Beaty Bridge School	Whitmire North, SC / N34.58680° W81.58871°	Rosenwald, Fire Insurance	SHPO
Bishop School	Union West, SC / N34.64347° W81.66816°	Rosenwald	SHPO
*Cedar Grove School	Jonesville, SC / 34.79097° W81.71121°	Rosenwald, Fire Insurance	SHPO
County Training School		Rosenwald	SHPO
Jerusalem School	Pacolet Mills, SC / N34.88985° W81.66315°	Rosenwald, Fire Insurance	SHPO
Johnson (Hanes School)	Kelton, SC / N34.77208° W81.50371°	Rosenwald	SHPO
Jonesville Colored		Rosenwald, Fire Insurance	SHPO
Mt. Cavalry School		Rosenwald	SHPO
*Mt. Rowell School		Rosenwald, Fire Insurance	SHPO
New Harris School		Rosenwald	SHPO
New Hope School	Sedalia, SC / N34.61069° W81.71510°	Rosenwald	SHPO
Old Harris School		Rosenwald	SHPO
Red Point School		Rosenwald	SHPO
Union Branch School	Kelton, SC / N34.85652° W81.62010°	Rosenwald	SHPO
West Springs School	Glenn Springs, SC/ N34.76152° W81.78177°	Rosenwald	SHPO

Woodson School	Jonesville, SC / N34.76624° W81.68177°	Rosenwald	SHPO
*Adamasburg School			
Oak Grove Colored			
Poplar Grove Colored	Union East, SC / N34.63125° W81.54066°		
Homes Colored			
Brandon Colored			
Hamilton Colored	Carlisle, SC / N34.50431° W81.46399°		
Thompson Colored	Glenn Springs, SC / N34.80874° W81.75955°		
Canaan Colored	Sedalia, SC / N34.58652° W81.66427°		
Douglas Colored	Whitmire South, SC / N34.49514° W81.53538°		
Maybin Colored		Fire Insurance	
Macedonia Colored	Philson Crossroads, SC / N34.58263° W81.78510°	Fire Insurance	
McBeth Grammar Colored	Union East, SC / N34.70708° W81.61760°	Fire Insurance	
Sims High Colored	Carlisle, SC / N34.55125° W81.45482°	Fire Insurance	Historical Marker
Rock Hill Colored	Pacolet Mills, SC / N34.87541° W81.71649°	Fire Insurance	

Spears Colored		Fire Insurance
Emmanuel Chapel Colored	Lockhart, SC / N34.84513° W81.49926°	Fire Insurance
Farr Colored	Kelton, SC / N34.77013° W81.57343°	Fire Insurance
Harris Colored	Kelton, SC / N34.81597° W81.57232°	Fire Insurance
Green (Cedar) Hill Colored		Fire Insurance
Wyatt Chapel Colored	Cross Anchor, SC / N34.71847° W81.77899°	Fire Insurance
Carew Colored		Fire Insurance
Cold Well Colored	Whitmire North, SC / N34.55847° W81.58927°	Fire Insurance

Sims High Colored

Carlisle, Union County



www.archivesindex.sc.gov

Williamsburg County

School	Location	Type
Cooper School District #11	Undefined	Rosenwald
Cooper School District #30	Undefined	Rosenwald
Greeleyville Elementary School	1-69 Varner Ave Greeleyville SC 29056 / 33.575958, -79.990421	Rosenwald
Hemingway School	COME BACK TO THIS	Rosenwald
Kingstree School	Undefined	Rosenwald
Nesmith Corner School	Undefined	Rosenwald
Ox Swamp School	Undefined	Rosenwald
Ox Swamp School (Rebuilt)	Undefined	Rosenwald
St. Mark School	40-48 Acadian Ln Kingstree SC 29556 / 33.574553, -79.644816	Rosenwald
St. Mary School	4999-5009 U.S. 521 Salters SC 29590 / 33.541781, -79.754543	Rosenwald

Join the South Carolina African American Heritage Foundation

The South Carolina African American Heritage Foundation supports the efforts of the South Carolina African American Heritage Commission to identify and promote the preservation of historic sites, structures, buildings, and culture of the African American experience and to assist and enhance the efforts of the South Carolina Department of Archives and History. Tax-deductible donations start at \$25. For more information:

South Carolina African American Heritage Foundation
P O Box 1053
Hartsville, SC 29551
843-332-3589, or e-mail scaaheritagefound@gmail.com
www.scaaheritagefound.org

