



RECONSTRUCTION ERA
NATIONAL HISTORIC NETWORK



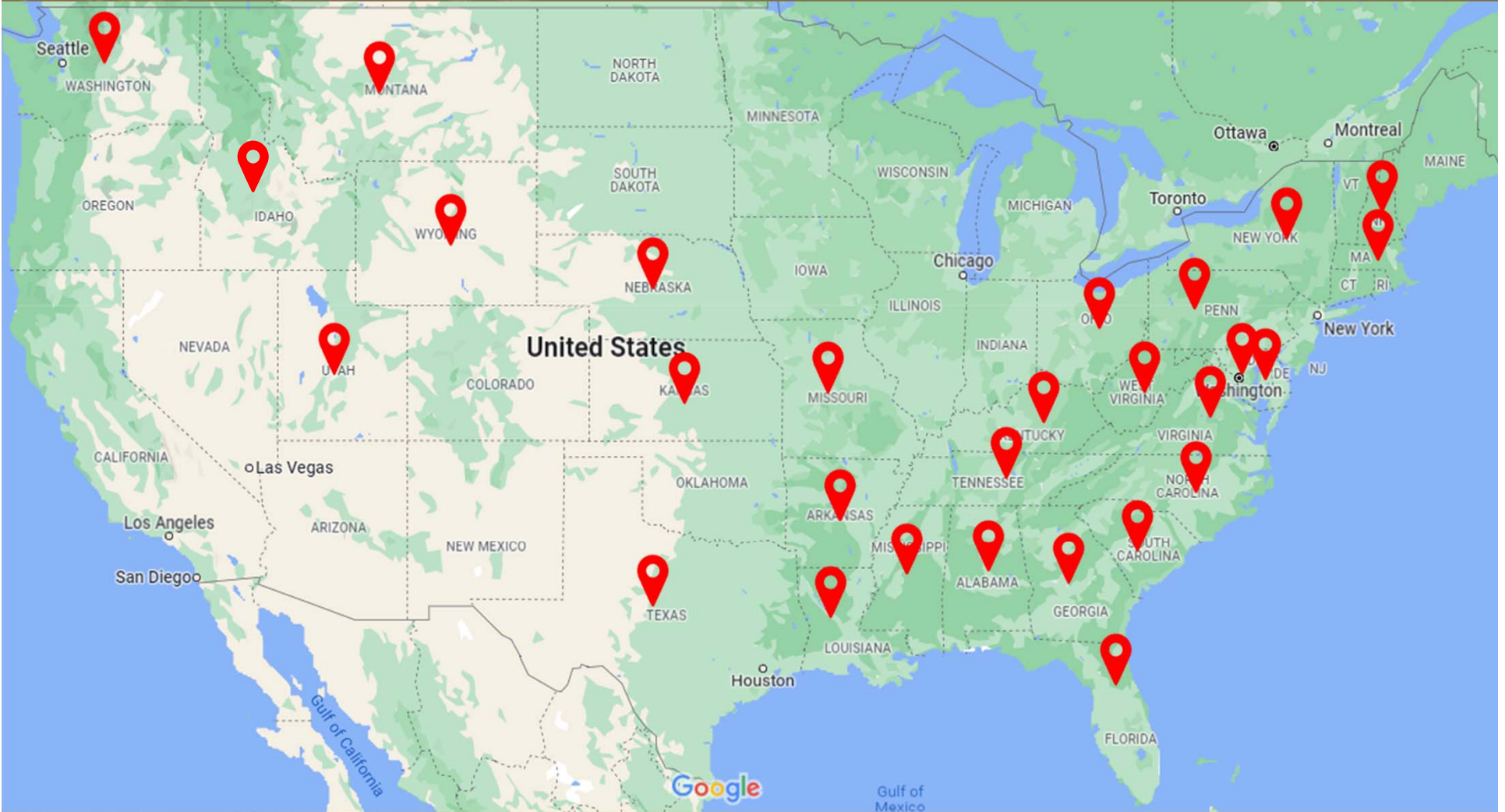
What is the Network?

- The Reconstruction era (1861-1900) is the historic period in which the United States grappled with the question of how to integrate millions of newly freed African Americans into social, political, economic, and labor systems.
- The John D. Dingell, Jr. Conservation, Management, and Recreation Act (2019).
- Network is nationwide and works to provide opportunities for visitors to connect to the stories of Reconstruction.

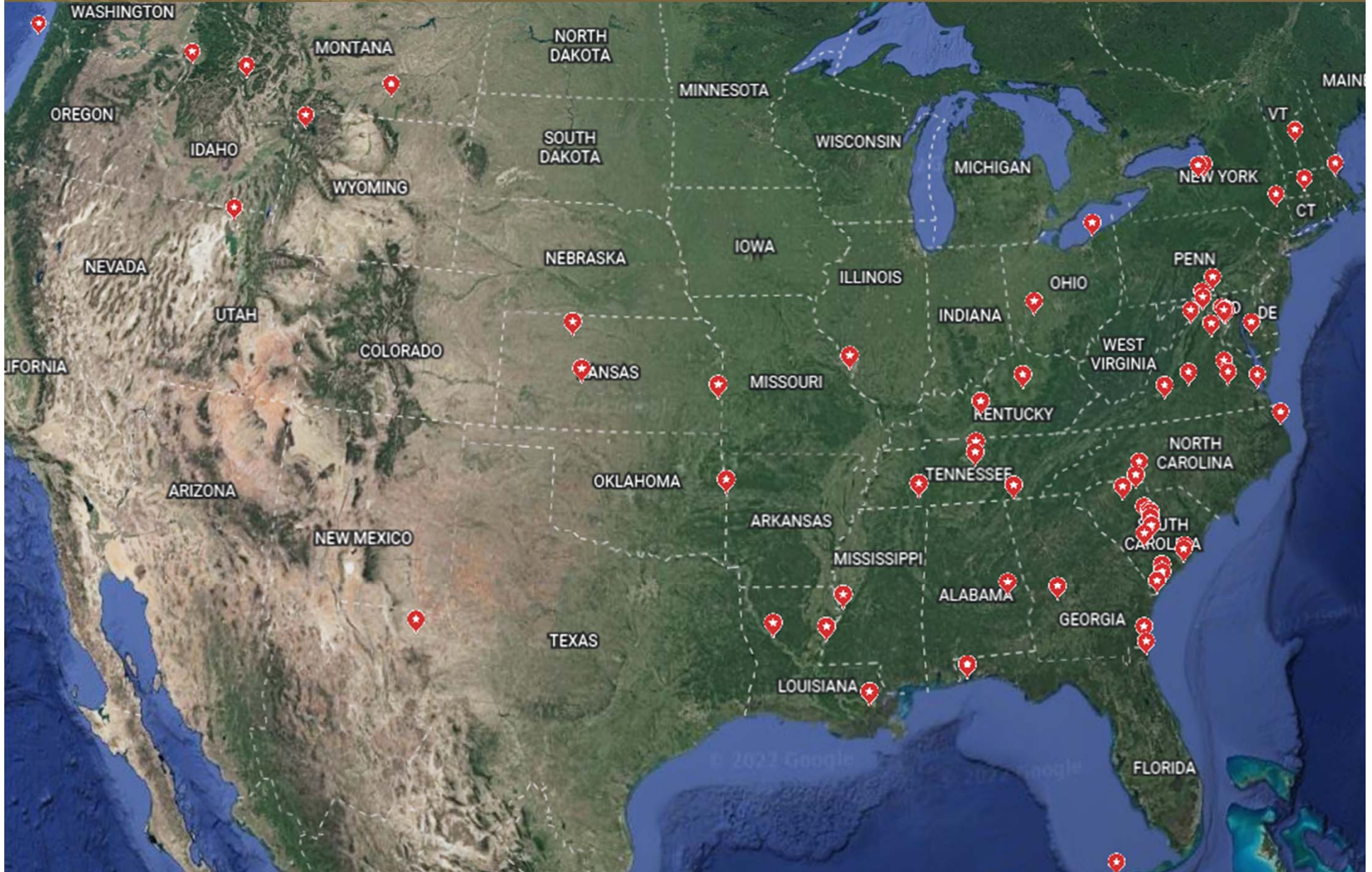
Discover the Network

- The resources (property, facility, or program) chosen for inclusion in the Reconstruction Era National Historic Network offer a comprehensive overview of the people, places, and events associated with Reconstruction across the United States.
- As of **April 2022**, we have **77** sites that are included as part of the Network
 - National Parks, museums, HBCUs, houses, churches, historic parks and sites
 - 27 States plus the District of Columbia

Discover the Network



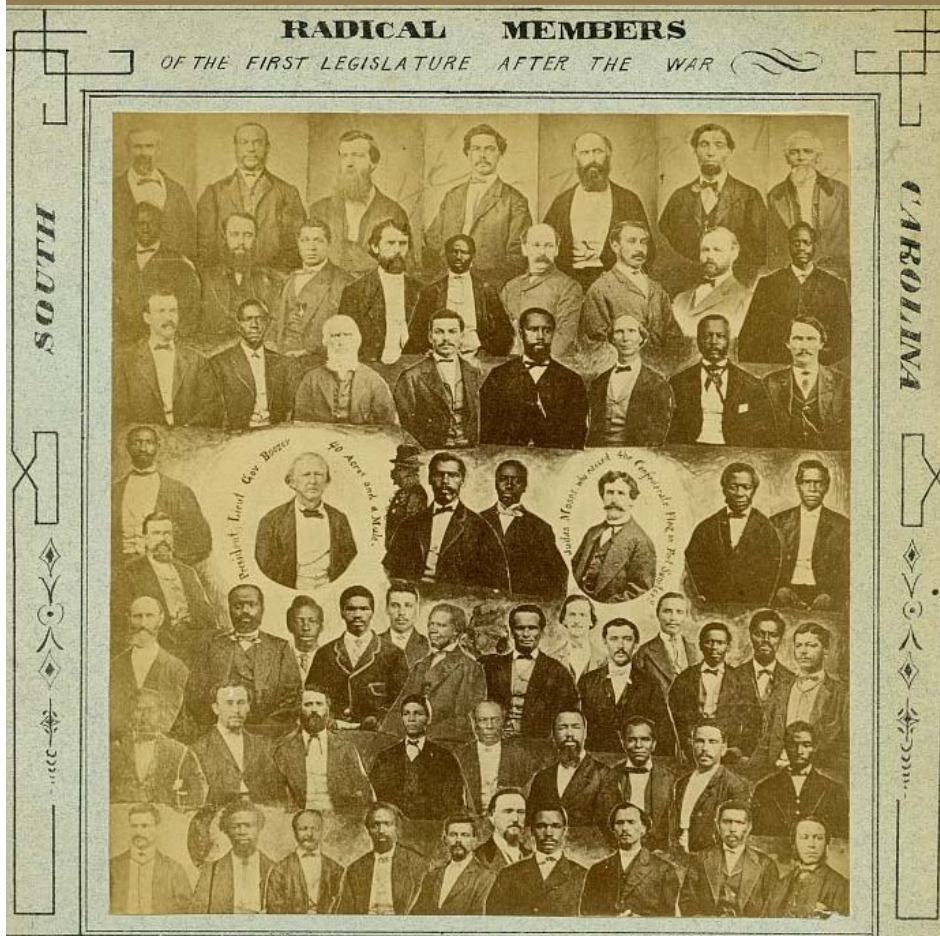
Discover the Network – As of 4/1/22



Criteria

- (A) All units and programs of the National Park Service that are determined by the Secretary to relate to the Reconstruction Era.
- (B) Other Federal, State, local, and privately owned properties that the Secretary determines—
 - (i) relate to the Reconstruction Era; and
 - (ii) are included in, or determined by the Secretary to be eligible for inclusion in, the National Register of Historic Places.
- (C) Other governmental and nongovernmental sites facilities, and programs of an educational, research, or interpretive nature that are directly related to the Reconstruction Era.

Criteria cont'd.



- Connection to Reconstruction (1861-1900)
- Listed in or eligible for the National Register of Historic Places (if applicable)
- NPS units or programs determined to relate to Reconstruction
- Owner permission

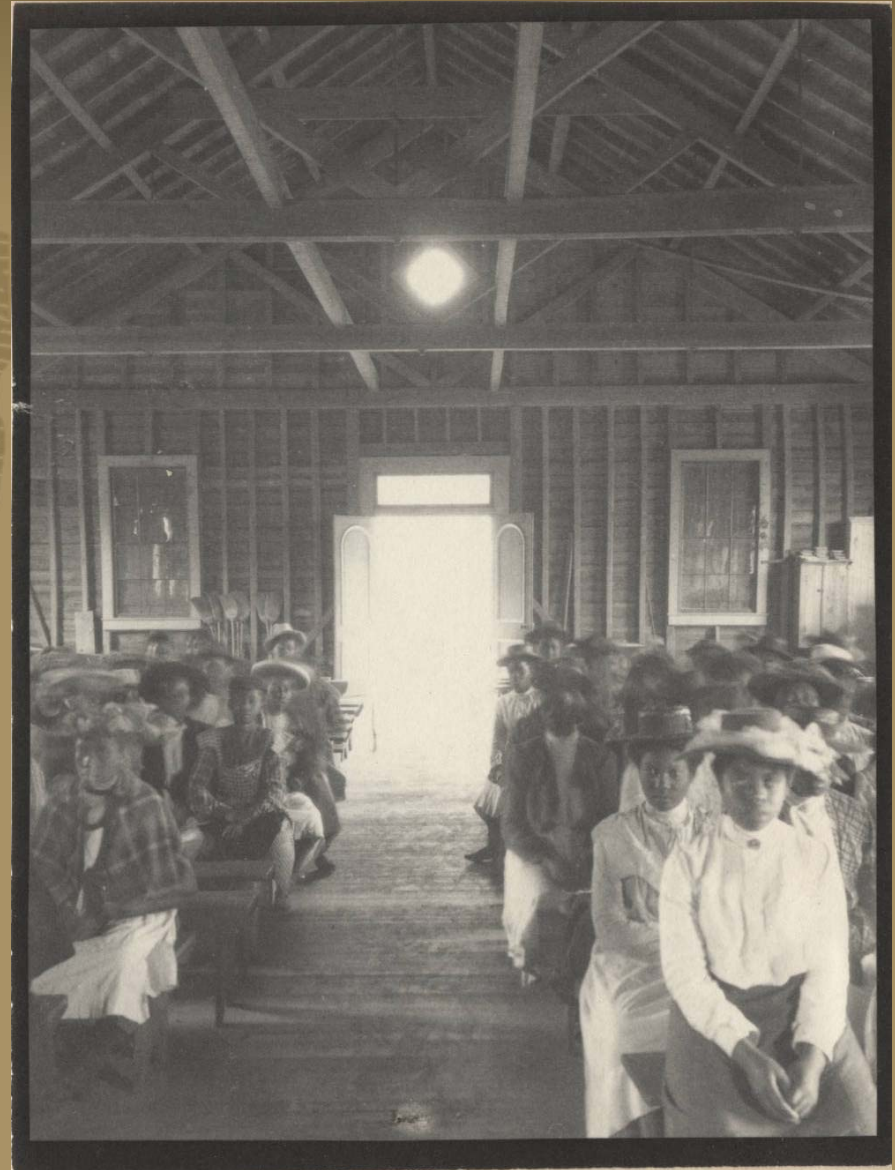
Network Key Values

- **National in scope:** Reconstruction did *not* just take place in the South
- **Inclusive:** emphasize the accomplishments of *all* citizens
- **Relevant:** the people and stories from 1861-1900 are just as important today

UAW SAYS:
WE SEEK THE
FREEDOM
IN 1963
PROMISED
IN 1863

Defining Resources

- **Properties:** The physical location of an event or pattern of events, or a location associated with a significant individual or group.
- **Facilities:** Locations that may or may not have existed during Reconstruction but are dedicated to collecting and interpreting the history of Reconstruction
- **Programs:** Site tour, performance, educational curriculum, or other way that the history of Reconstruction is presented or explained to the public.



The Museum of the Reconstruction Era

at the Woodrow Wilson Family Home



NRHP Eligibility

- Listed in or determined eligible for the National Register of Historic Places
- Requires communication with State Historic Preservation Office



Robert Smalls House, Beaufort SC

Benefits

- National recognition
- Use of the program logo and other marketing materials
- Technical assistance
- Assistance with educational resources development
- Research and scholarship
- Information sharing throughout Network

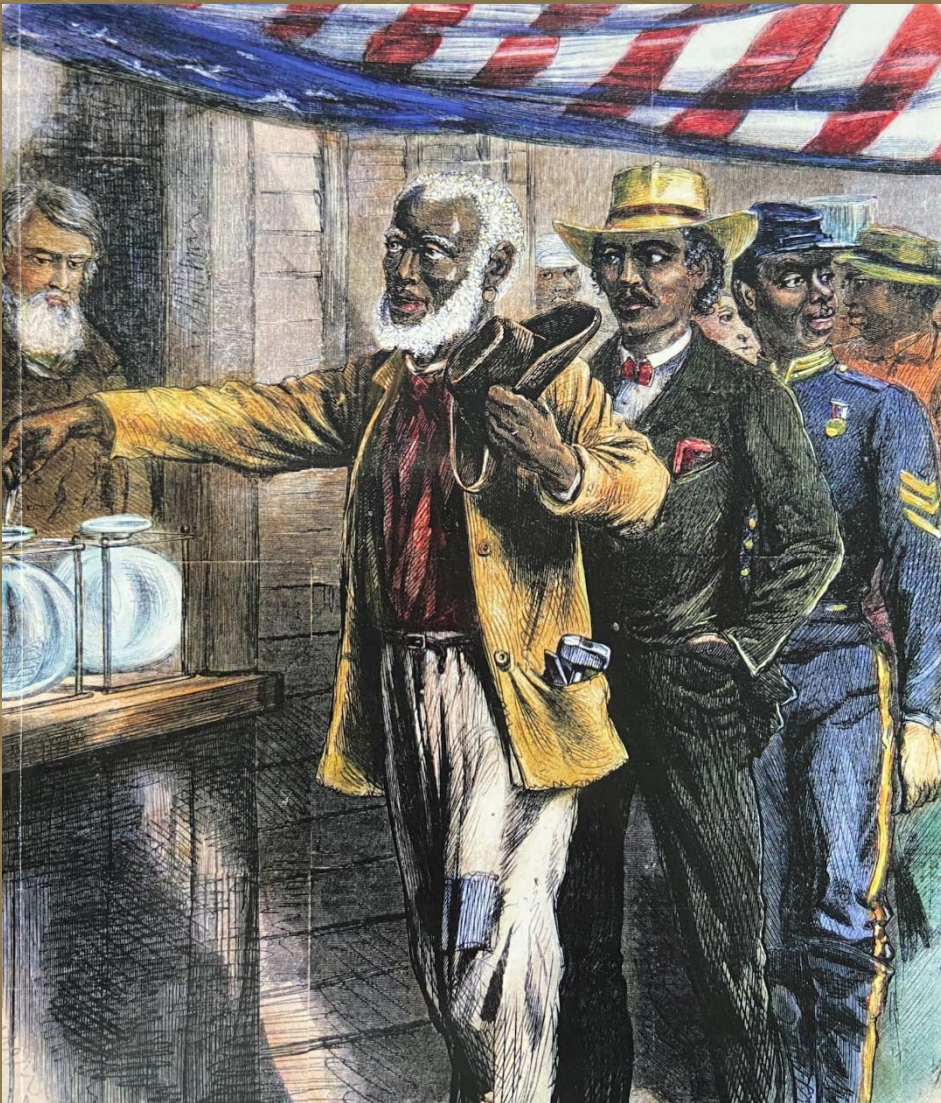


IN SOUTH CAROLINA"—THE COLOR-SERGEANT OF THE 1ST SOUTH CAROLINA (COLORED) VOLUNTEERS ADDRESSING THE REGIMENT, AFTER HAVING BEEN REARS AND STRIPES, AT SMITH'S PLANTATION, PORT ROYAL ISLAND, JANUARY 1.—FROM A SKETCH BY OUR SPECIAL ARTIST.—SEE PAGE 276.

What the Network Isn't



Application Process



- Applicants can apply any time using our [electronic application form](#).
- For properties that are not on the NR, we can provide information on obtaining a Determination of Eligibility Letter.
- Supplemental documents, e.g., newspaper clippings, bibliography, etc. are appreciated, but not required.
- New sites will be notified and formally announced quarterly, (MAR, JUN, SEP, DEC).

Website

<https://www.nps.gov/subjects/reconstruction/network.htm>



Network Program Staff

Superintendent:

Scott Teodorski, 803-767-0534

scott_teodorski@nps.gov

Historian:

Nathan Betcher, 843-592-0370

nathan_betcher@nps.gov

Administrative Assistant

Michelle Fassler-Garcia, 843-592-2110

michelle_fassler-garcia@nps.gov



Questions?

